



WHAT IS THE..... INTEGRA Façade System.?

Our premium cavity based, rainscreen Plaster Façade System applied over INTEGRA, reinforced lightweight concrete panels.

Modern architecture places tremendous demand on the building envelope. The INTEGRA Plaster Façade System offers the flexibility to meet these demands in a cost effective manner whilst providing Thermal, Acoustic and Impact resistance benefits, all the while protecting the structure.

Proven Technology

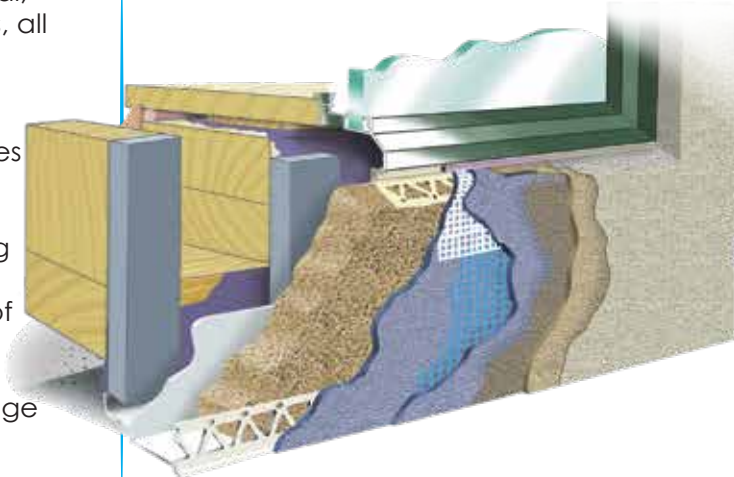
The INTEGRA Façade System incorporates mechanically fixed 50mm or 75mm INTEGRA Panels, installed over the time tested cavity construction method along with our exclusive EdgeSeal flashing technology. Protected with our lamina of hand applied modified renders, fibreglass reinforcement all finished with your choice of texture from our wide range incorporating 'genuine' Resene colours.

Attractive and Durable

This System carries our written 15 year Performance Guarantee, and 5 year Workmanship Warranty from your qualified LBP Registered Plasterer. The INTEGRA Façade System includes our premium OnSite Assistance programme providing surety of performance from installation to finish.

System Features:

- Drained Rainscreen Façade System
- Hand Plastered
- Registered LBP plasterer application
- Performance Guarantee
- Patented EdgeSeal window flashing suite
- Steel wire reinforced Lightweight Concrete Panel
- 'Genuine' Resene Colour Range
- Technical OnSite Assistance
- Seismic and Weathertight tested (BRANZ)
- BRANZ Appraisal # 681



INTEGRA

LIGHTWEIGHT CONCRETE SYSTEMS

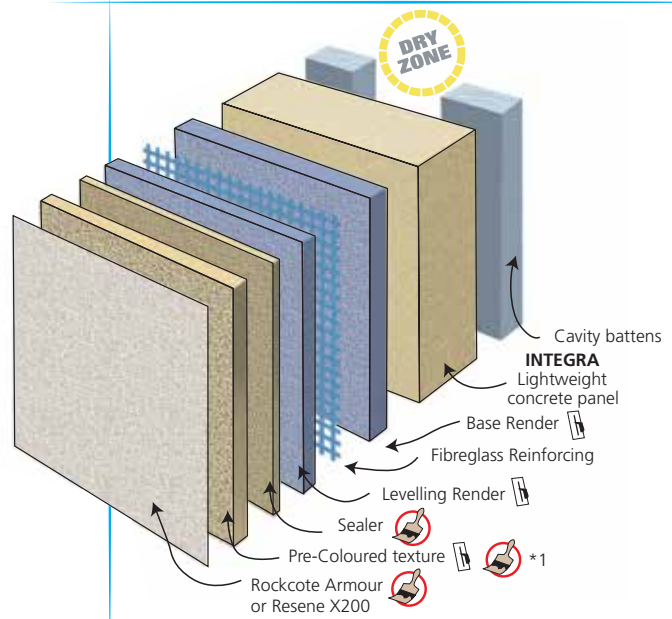
*1 Natural Mineral texture finishes are available upon request. All our Natural Mineral textures are finished with a Resene Construction Systems approved 3 coat paint system.



Indicates Hand Plastered applications



Indicates pre-coloured applications



INTEGRA Façade
Light Weight Concrete

INTEGRA Flooring

INTEGRA Fencing

GRAPHEX Insulated Façade

GRAPHEX Solid

GRAPHEX Masonry Overlay

Masonry Block

Fibre Cement

LiteRock

Brick

ICF (Polystyrene Blocks)

Tilt Panel

Milano interior

Earthen interior

Marakesh

	INTEGRA Façade	INTEGRA Flooring	INTEGRA Fencing	GRAPHEX Insulated Façade	GRAPHEX Solid	GRAPHEX Masonry Overlay	Masonry Block	Fibre Cement	LiteRock	Brick	ICF (Polystyrene Blocks)	Tilt Panel	Milano interior	Earthen interior	Marakesh
Insulated	●	○	○	○	○	○	○	○	○	○	○	○	○	○	○
Impact Resistance	●	○	○	○	○	○	○	○	○	○	○	○	○	○	○
Acoustic	●	○	○	○	○	○	○	○	○	○	○	○	○	○	○
Resene Colours	●	○	○	○	○	○	○	○	○	○	○	○	○	○	○
BRANZ	●	○	○	○	○	○	○	○	○	○	○	○	○	○	○
Fire Tests	●	○	○	○	○	○	○	○	○	○	○	○	○	○	○
FPB	●	○	○	○	○	○	○	○	○	○	○	○	○	○	○
Full Render System	●	○	○	○	○	○	○	○	○	○	○	○	○	○	○
Substrate supplied	●	○	○	○	○	○	○	○	○	○	○	○	○	○	○
Acrylic Texture	●	○	○	○	○	○	○	○	○	○	○	○	○	○	○
Mineral Texture	●	○	○	○	○	○	○	○	○	○	○	○	○	○	○
Cavity System	●	○	○	○	○	○	○	○	○	○	○	○	○	○	○
GreenSite	●	○	○	○	○	○	○	○	○	○	○	○	○	○	○
Masonry Construction	●	○	○	○	○	○	○	○	○	○	○	○	○	○	○
Window Reveals	●	○	○	○	○	○	○	○	○	○	○	○	○	○	○