



HydroPlast

Innovative protection and enhancement to your investment

Description:

HydroPlast is a dry powder hydrophobic plaster for use as a tanking membrane over prepared Masonry, gypsum board, EPS & XPS insulation board, Rockcote & PSL plaster facades.

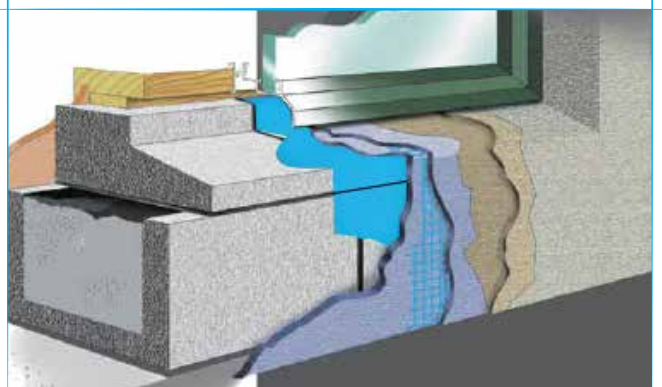
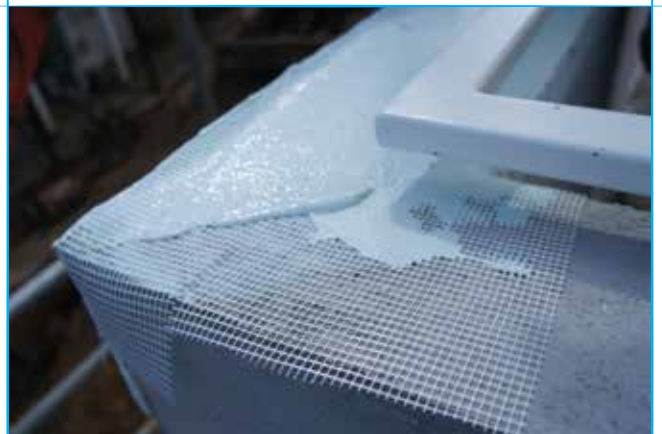
Typical Uses: Reinforced Base Coat Plaster applied over the substrate. Typically used around Concrete block and ICF Block window and other openings. Also for use in Bathrooms, Foundations, parapets, balustrade tops to provide a waterproof coating ready to accept Rockcote Resene finishing coats.

Expectation: HydroPlast will cure to form a strong, hydrophobic, flexible and crack resistant background which will accept Rockcote Resene finishing coats.

Limitations: Do not apply more than 2mm per coat. Can be used with or without reinforcing mesh dependant on specified application. If applying to foundations, parapets, balustrade tops 150gsm Alkali resistant fibreglass mesh must be applied.

Technical Data:

Coverage: 2m² @ 1mm thick
Substrates: Masonry, gypsum board, EPS & XPS insulation board, Rockcote & PSL plasters.
Abrasive strength: Excellent
Adhesion: Excellent
Crack resistance: Excellent
Vapour Permeability: No vapour barrier formed.
Colour: light blue
Surface Preparation:





HydroPlast

Ensure surface is clean, sound, dry and free from dust, dirt, grease, mould and lichen. Any large bug holes and defects must be patched prior to application of HydroPlast to ensure a uniform finished surface thickness is achieved.

HydroPlast requires fibreglass reinforcement when applied as a based plaster over EPS/XPS styrene substrates. This aids in the impact resistance and build up of product to the correct thickness.

Unreinforced applications include – skimming over prepared substrates; ie Gypsum board, and cement sheet with stopped joints, that have been sealed.

Applications:

Brush /Roller application - without fibreglass reinforcement HydroPlast can be applied easily with a brush, or roller. Prior to starting application dampen the exposed masonry surface. Apply generously to the prepared substrate in two coats to achieve a minimum 1mm thickness (without fibreglass reinforcement). Do not attempt to rework the product once a dry film has started to form.

Trowel application - without fibreglass reinforcement HydroPlast can be applied easily with a trowel. Prior to starting application dampen exposed masonry surfaces. Apply generously to the prepared substrate in one coat to achieve a minimum 1mm thickness. Apply HydroPlast only when the temperature is between 5°C and 30°C and will be in that range for the 24 hours period following application. Do not attempt to re-work the product once a dry film has started to form.

Trowel application - with fibreglass reinforcement HydroPlast can be applied easily with a trowel. Prior to starting application dampen exposed masonry surfaces. Apply generously to the prepared substrate in one coat to achieve a minimum 1mm thickness. Apply pre-cut fibreglass reinforcement with light pressure into the wet HydroPlast. Apply

HydroPlast only when the temperature is between 5°C and 30°C and will be in that range for the 24 hours period following application. Do not attempt to re-work the product once a dry film has started to form.

Curing: HydroPlast should be protected from hot drying winds and direct sunlight for the first 12 hours. Protect newly applied HydroPlast from rain and water run off for the first 12 hours.

Clean up: Wash equipment and spills as soon as possible with water. HydroPlast has a high concentration of aggressive flexible, adhesive resins that are difficult to remove once dry.

Environmental and Safety

Ensure washing water does not enter waterways. Wet waste can be soaked into land or disposed of in trade waste. The HydroPlast powder is an irritant and paper dust masks are advised when handling. The wet compound is Alkaline and prolonged skin contact should be avoided. Wear rubber gloves, dust mask and safety glasses when handling product.

Material (SDS) Safety Data Sheets and (TDS) Technical Data Sheets are available on request or from our website.

Resene 
Construction Systems

www.rockcote.co.nz

0800 50 70 40