

| Sheet List Table | |
|------------------|--------------------------|
| Sheet Number | Sheet Title |
| 76.02.00 | Foundation |
| 76.03.00 | External Corner |
| 76.04.00 | Internal Corner |
| 76.05.00 | Window Sill |
| 76.06.00 | Window Jamb |
| 76.07.00 | Window Head |
| 76.08.00 | Soffit |
| 76.09.00 | Roof Apron |
| 76.10.00 | Vertical Control Joint |
| 76.11.00 | Horizontal Control Joint |

TradeSpec™ and RenderSpec™ are Registered Trademarks, both Documents are available on the Resene Construction Systems



CONFIDENTIALITY: No part of this publication may be reproduced or transmitted other than the intended use by Resene Construction Systems without written consent from the author.

System
Insulated Facade System

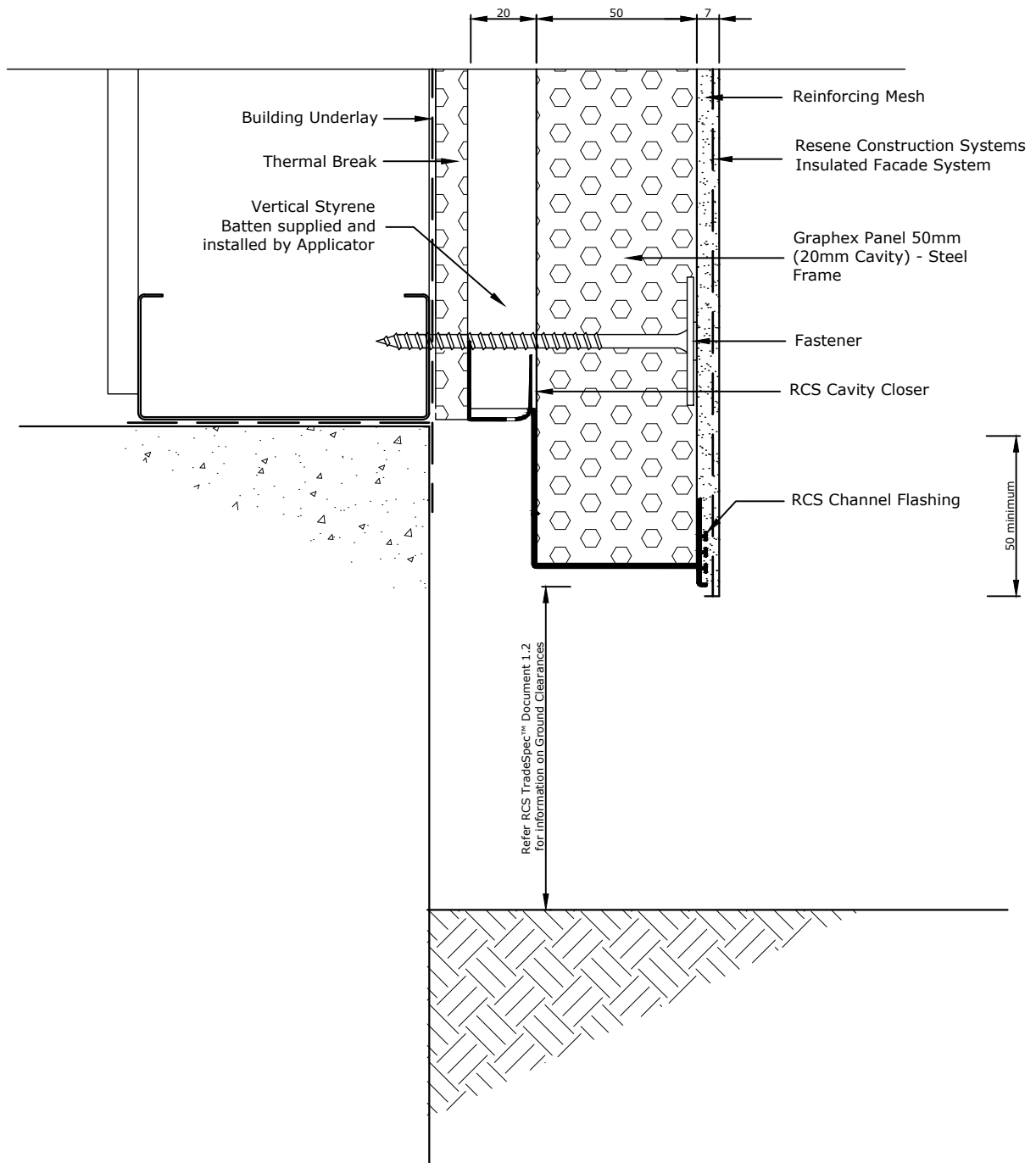
Substrate
Graphex Panel 50mm (20mm Cavity) - Steel Frame

Drawing Name
Drawing Register

Scale
1 : 2 @ A4

Date
1 November 2017

Sheet
76.00.00



Refer RCS TradeSpec™ Document 1.2 for information on Ground Clearances

TradeSpec™ and RenderSpec™ are Registered Trademarks, both Documents are available on the Resene Construction Systems

Resene 
Construction Systems

System
 Insulated Facade System

Scale
 1 : 2 @ A4

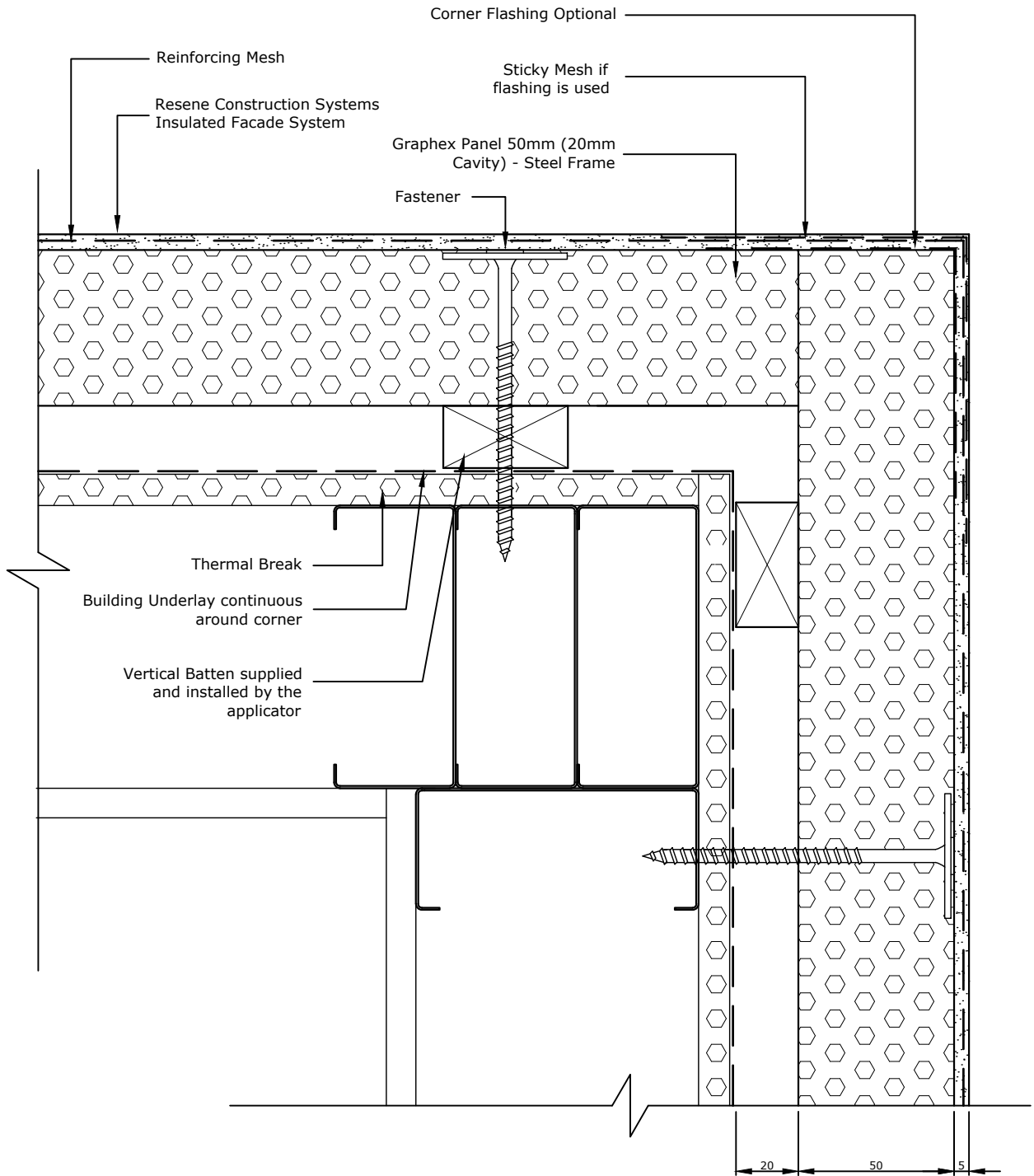
Substrate
 Graphex Panel 50mm (20mm Cavity) - Steel Frame

Date
 26 April 2021

CONFIDENTIALITY: No part of this publication may be reproduced or transmitted other than the intended use by Resene Construction Systems without written consent from the author.

Drawing Name
 Foundation

Sheet
 76.02.00



TradeSpec™ and RenderSpec™ are Registered Trademarks, both Documents are available on the Resene Construction Systems

Resene 
Construction Systems

System
 Insulated Facade System

Substrate
 Graphex Panel 50mm (20mm Cavity) - Steel Frame

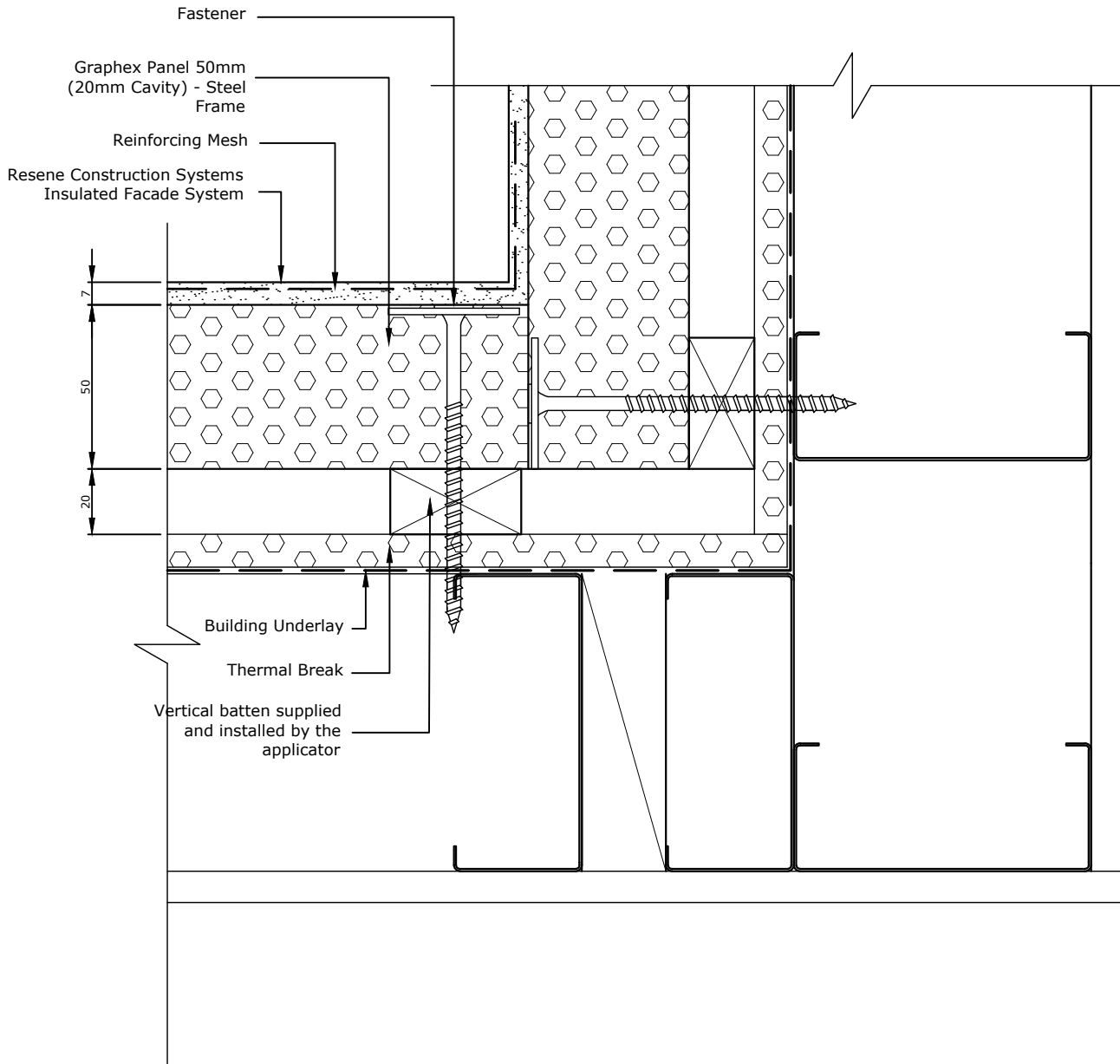
Scale
 1 : 2 @ A4

Date
 26 April 2021

CONFIDENTIALITY: No part of this publication may be reproduced or transmitted other than the intended use by Resene Construction Systems without written consent from the author.

Drawing Name
 External Corner

Sheet
 76.03.00



TradeSpec™ and RenderSpec™ are Registered Trademarks, both Documents are available on the Resene Construction Systems

Resene 
Construction Systems

CONFIDENTIALITY: No part of this publication may be reproduced or transmitted other than the intended use by Resene Construction Systems without written consent from the author.

System
 Insulated Facade System

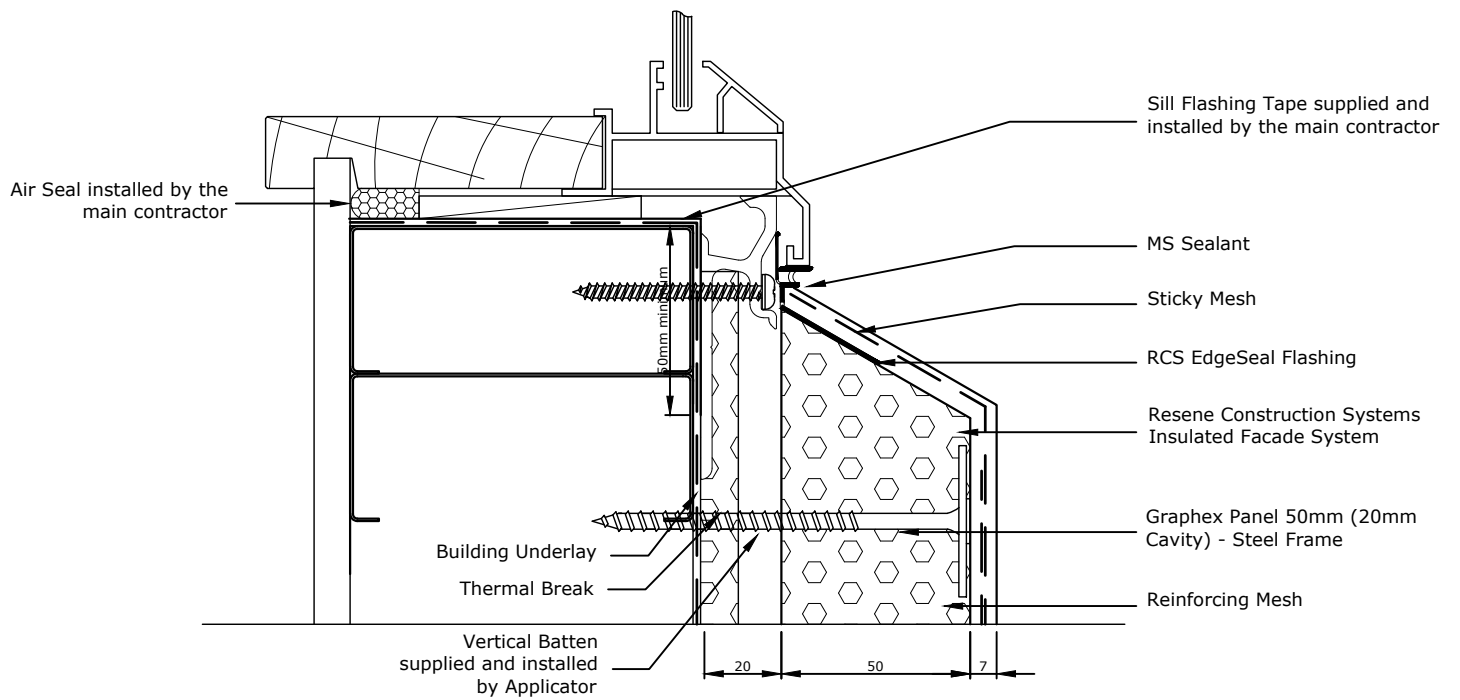
Substrate
 Graphex Panel 50mm (20mm Cavity) - Steel Frame

Drawing Name
 Internal Corner

Scale
 1 : 2 @ A4

Date
 26 April 2021

Sheet
 76.04.00



Allow a 25mm Gap between the back of the joinery and external facing timber framing to allow the sill flashing to fit.

TradeSpec™ and RenderSpec™ are Registered Trademarks, both Documents are available on the Resene Construction Systems

Resene
Construction Systems

CONFIDENTIALITY: No part of this publication may be reproduced or transmitted other than the intended use by Resene Construction Systems without written consent from the author.

System
Insulated Facade System

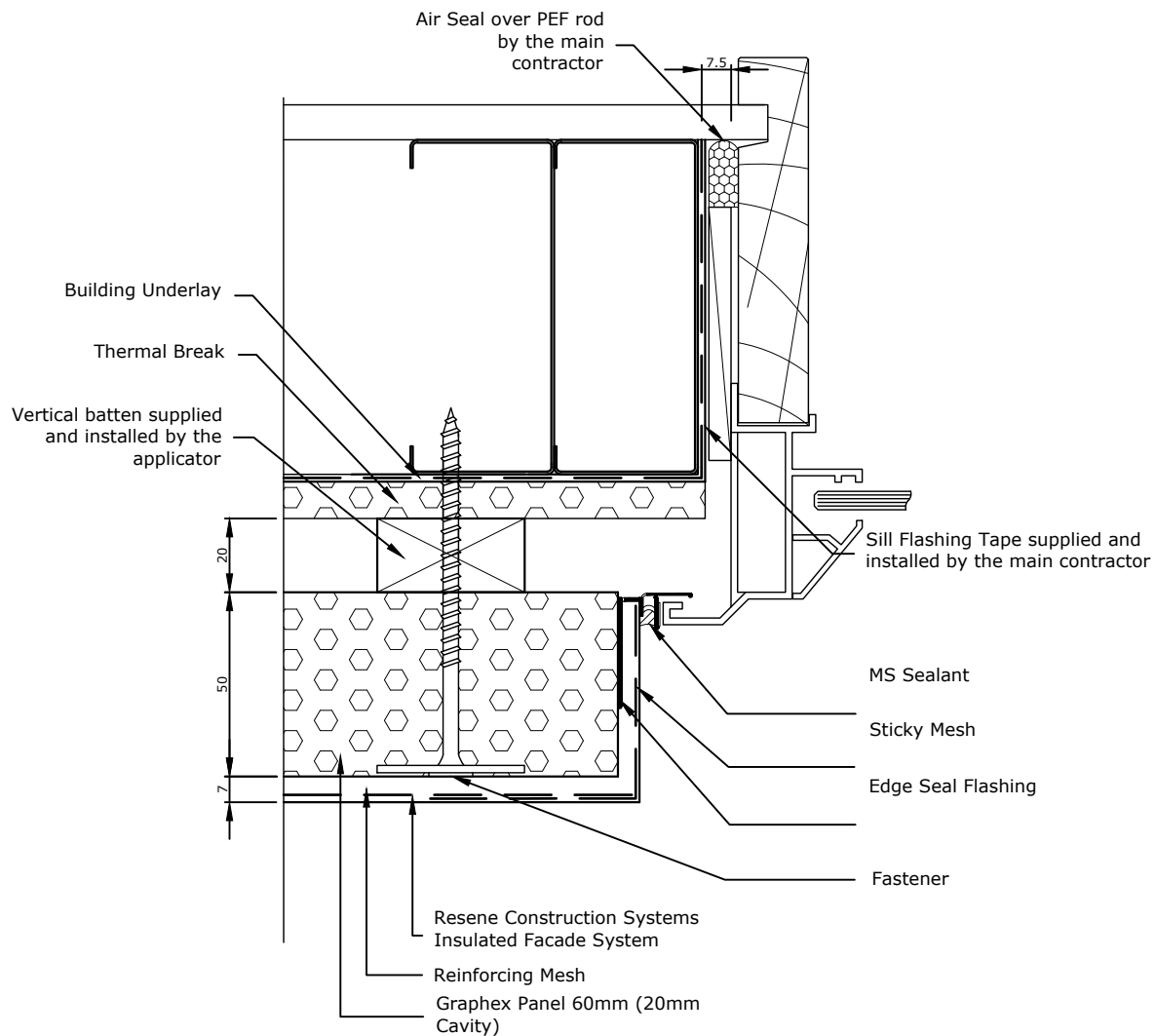
Substrate
Graphex Panel 50mm (20mm Cavity) - Steel Frame

Drawing Name
Window Sill

Scale
1 : 2 @ A4

Date
26 April 2021

Sheet
76.05.00



TradeSpec™ and RenderSpec™ are Registered Trademarks, both Documents are available on the Resene Construction Systems

Resene 
Construction Systems

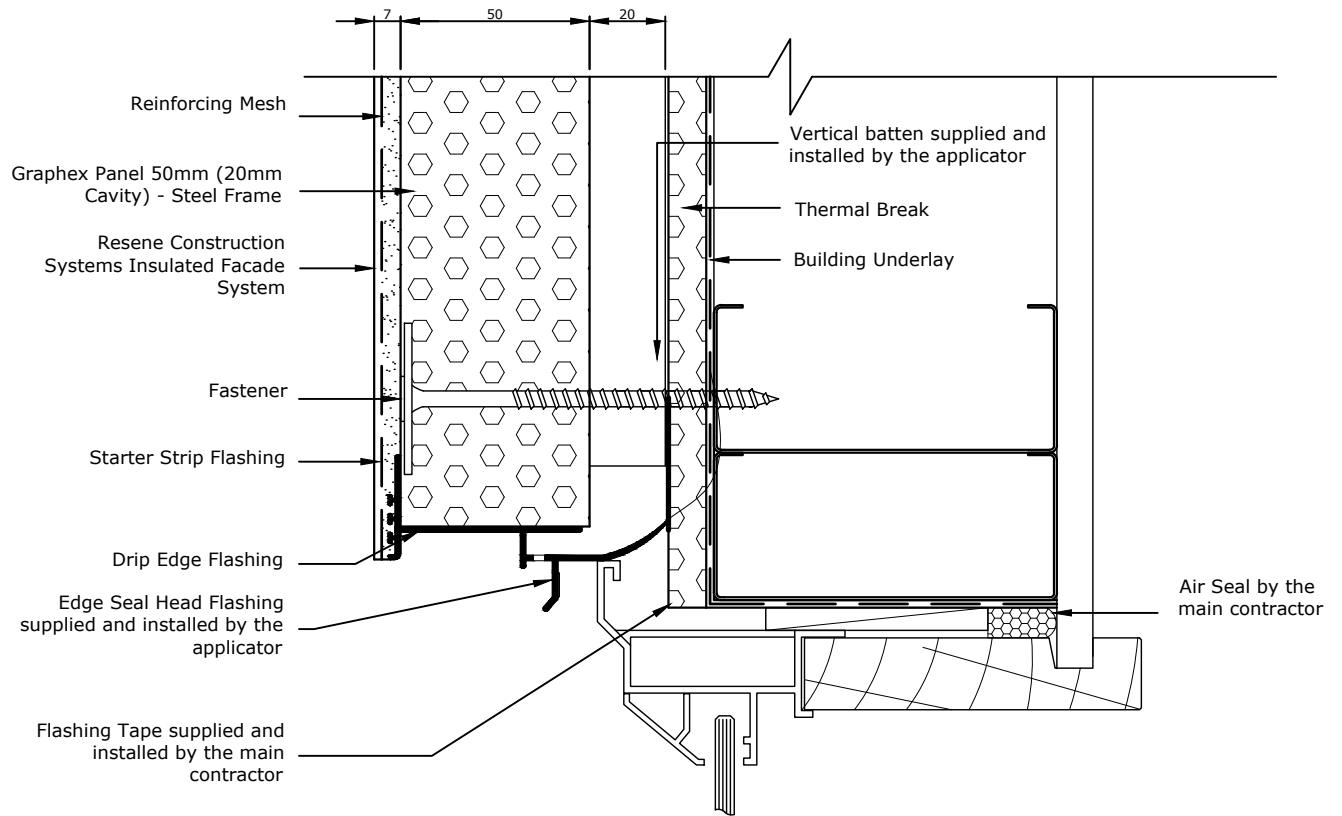
CONFIDENTIALITY: No part of this publication may be reproduced or transmitted other than the intended use by Resene Construction Systems without written consent from the author.

System
 Insulated Facade System
 Substrate
 Graphex Panel 50mm (20mm Cavity) - Steel Frame

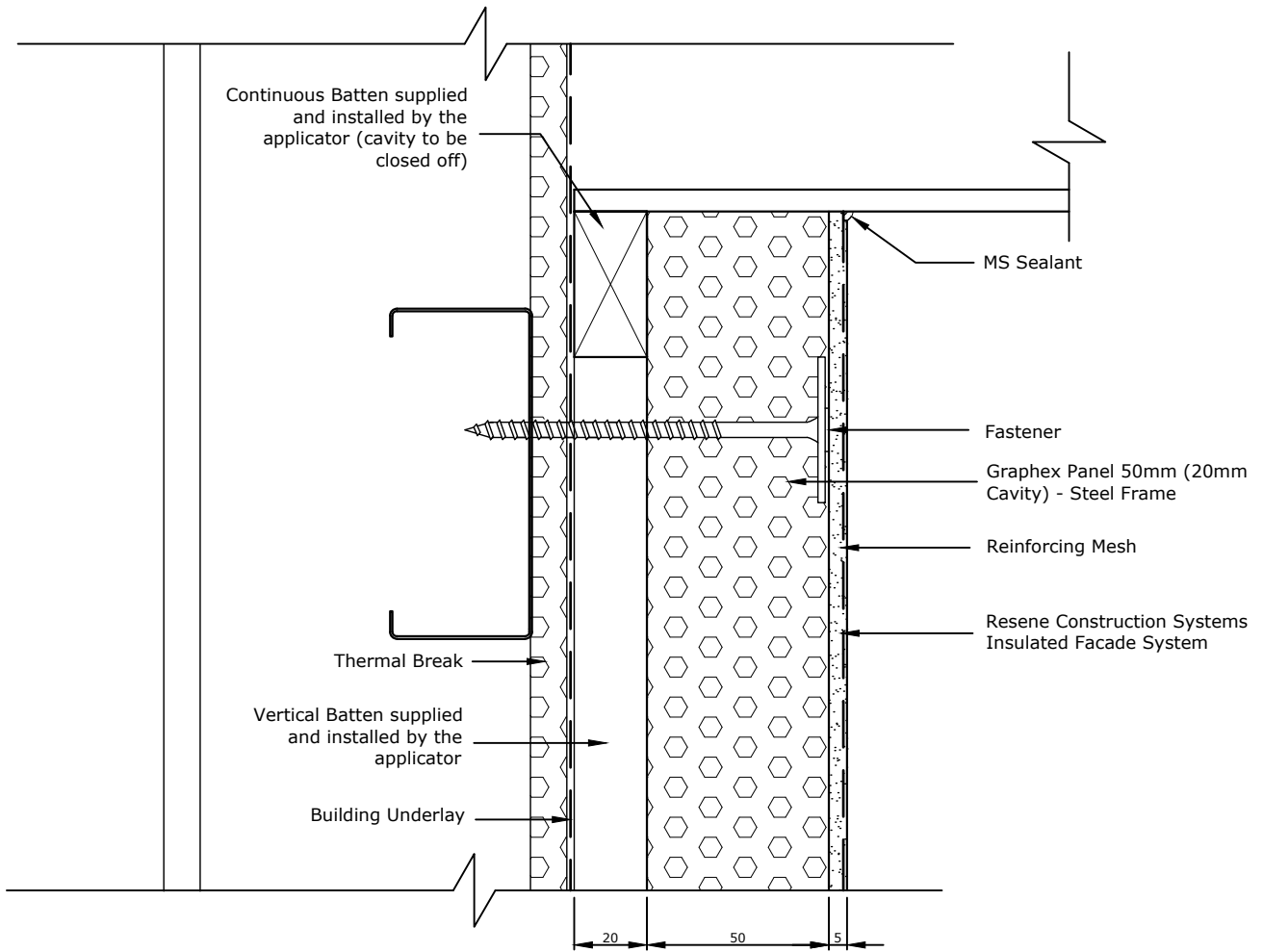
Drawing Name
 Window Jamb

Scale
 1 : 2 @ A4
 Date
 26 April 2021

Sheet
 76.06.00



TradeSpec™ and RenderSpec™ are Registered Trademarks, both Documents are available on the Resene Construction Systems



TradeSpec™ and RenderSpec™ are Registered Trademarks, both Documents are available on the Resene Construction Systems

Resene 
Construction Systems

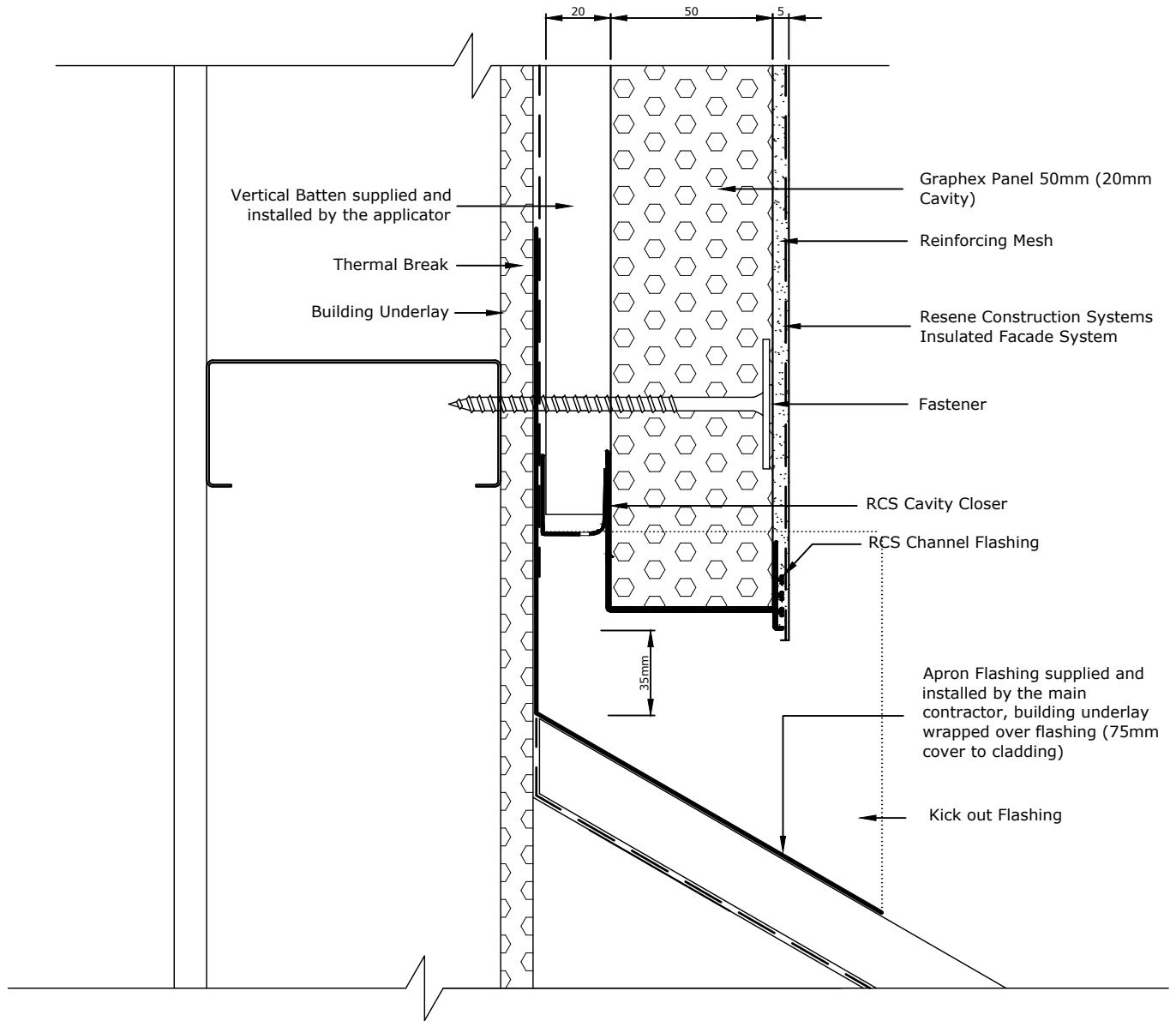
CONFIDENTIALITY: No part of this publication may be reproduced or transmitted other than the intended use by Resene Construction Systems without written consent from the author.

System
 Insulated Facade System
 Substrate
 Graphex Panel 50mm (20mm Cavity) - Steel Frame

Drawing Name
 Soffit

Scale
 1 : 2 @ A4
 Date
 26 April 2021

Sheet
 76.08.00



Refer RCS TradeSpec™ Document 1.2 for information on Roof Clearances

Metal flashing must be taped to the Building Underlay or covered with a second layer of wrap by the main contractor/window installer

TradeSpec™ and RenderSpec™ are Registered Trademarks, both Documents are available on the Resene Construction Systems

Resene
Construction Systems

System
Insulated Facade System

Scale
1 : 2 @ A4

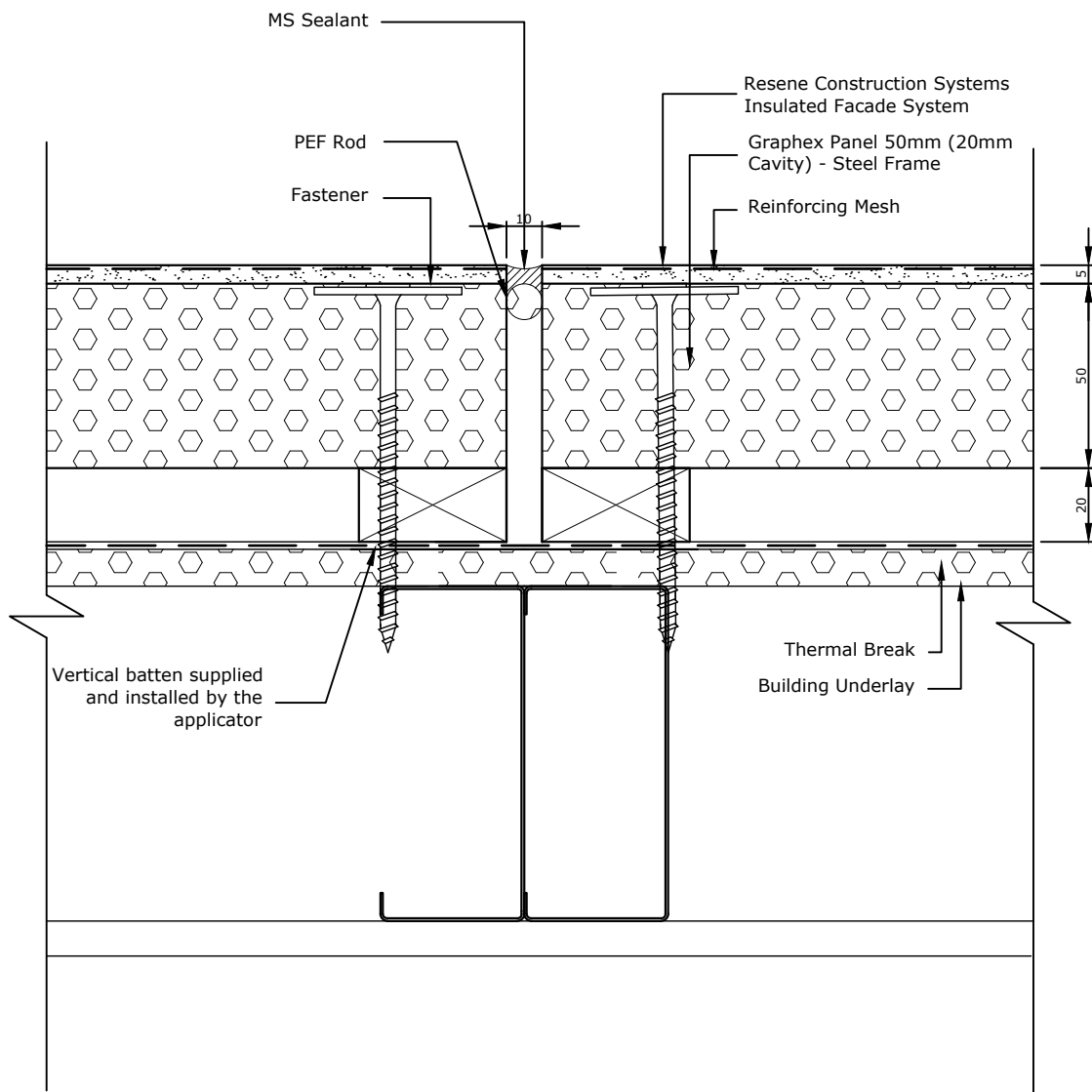
Substrate
Graphex Panel 50mm (20mm Cavity) - Steel Frame

Date
26 April 2021

CONFIDENTIALITY: No part of this publication may be reproduced or transmitted other than the intended use by Resene Construction Systems without written consent from the author.

Drawing Name
Roof Apron

Sheet
76.09.00



All Control Joint spacings and setouts are the responsibility of the Designer, for suggested locations refer to TradeSpec™ Document 1.4

TradeSpec™ and RenderSpec™ are Registered Trademarks, both Documents are available on the Resene Construction Systems

Resene 
Construction Systems

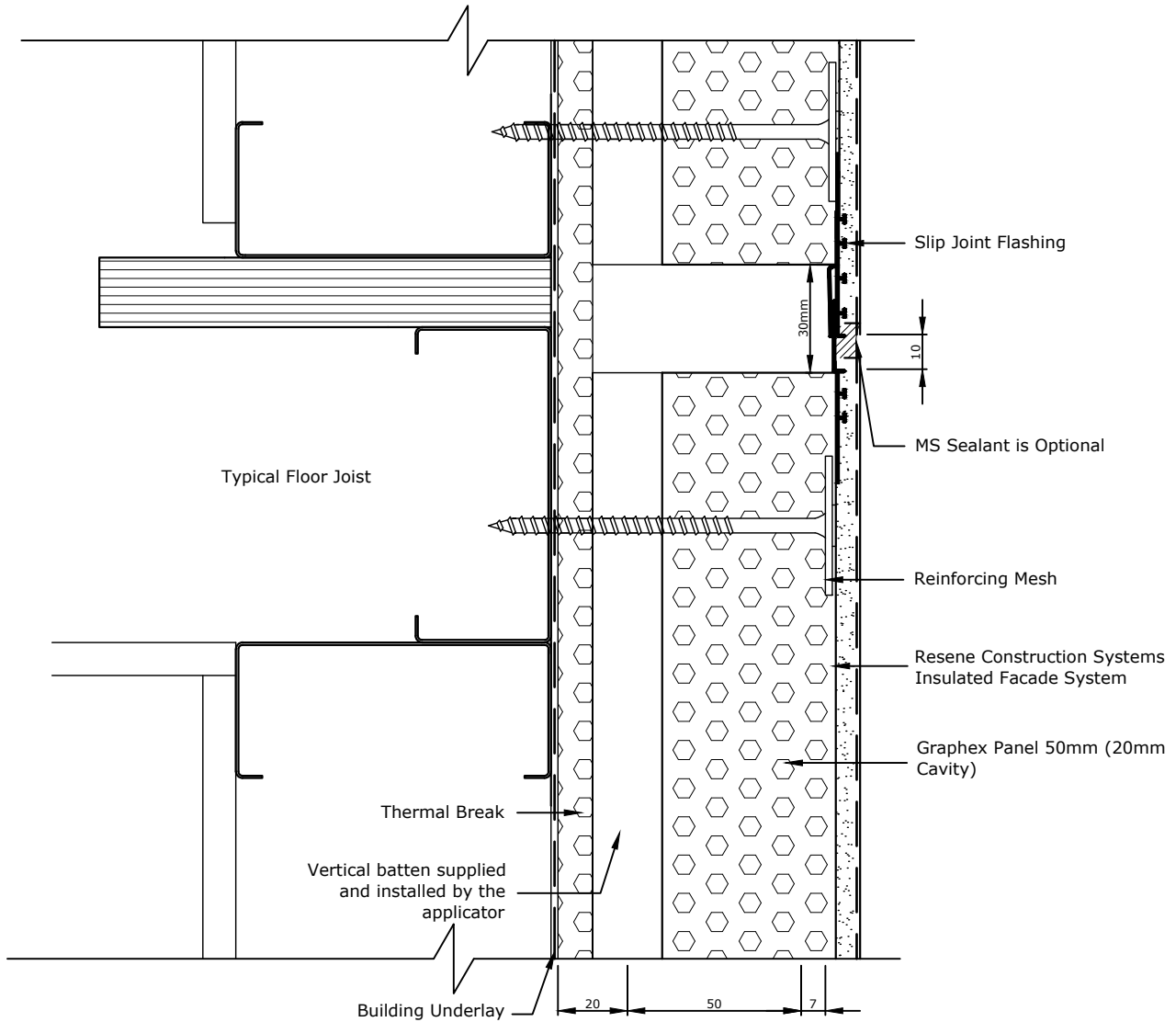
CONFIDENTIALITY: No part of this publication may be reproduced or transmitted other than the intended use by Resene Construction Systems without written consent from the author.

System
 Insulated Facade System
 Substrate
 Graphex Panel 50mm (20mm Cavity) - Steel Frame

Drawing Name
 Vertical Control Joint

Scale
 1 : 2 @ A4
 Date
 1 November 2017

Sheet
 76.10.00



Please note that there should be no fixings into the floor joists, the substrate should be left floating over this point.

All Control Joint spacings and setouts are the responsibility of the Designer, for suggested locations refer to TradeSpec™ Document 1.4 for suggested locations

TradeSpec™ and RenderSpec™ are Registered Trademarks, both Documents are available on the Resene Construction Systems

Resene
Construction Systems

CONFIDENTIALITY: No part of this publication may be reproduced or transmitted other than the intended use by Resene Construction Systems without written consent from the author.

System
Insulated Facade System
Substrate
Graphex Panel 50mm (20mm Cavity) - Steel Frame

Drawing Name
Horizontal Control Joint

Scale
1 : 2 @ A4
Date
26 April 2021

Sheet
76.11.00