

Sheet List Table	
Sheet Number	Sheet Title
86.02.00	Foundation
86.03.00	External Corner
86.04.00	Internal Corner
86.05.00	Window Sill
86.06.00	Window Jamb
86.07.00	Window Head
86.08.00	Soffit
86.09.00	Roof Apron
86.10.00	Vertical Control Joint
86.11.00	Horizontal Control Joint

TradeSpec™ and RenderSpec™ are Registered Trademarks, both Documents are available on the Resene Construction Systems



CONFIDENTIALITY: No part of this publication may be reproduced or transmitted other than the intended use by Resene Construction Systems without written consent from the author.

System
Insulated Facade System

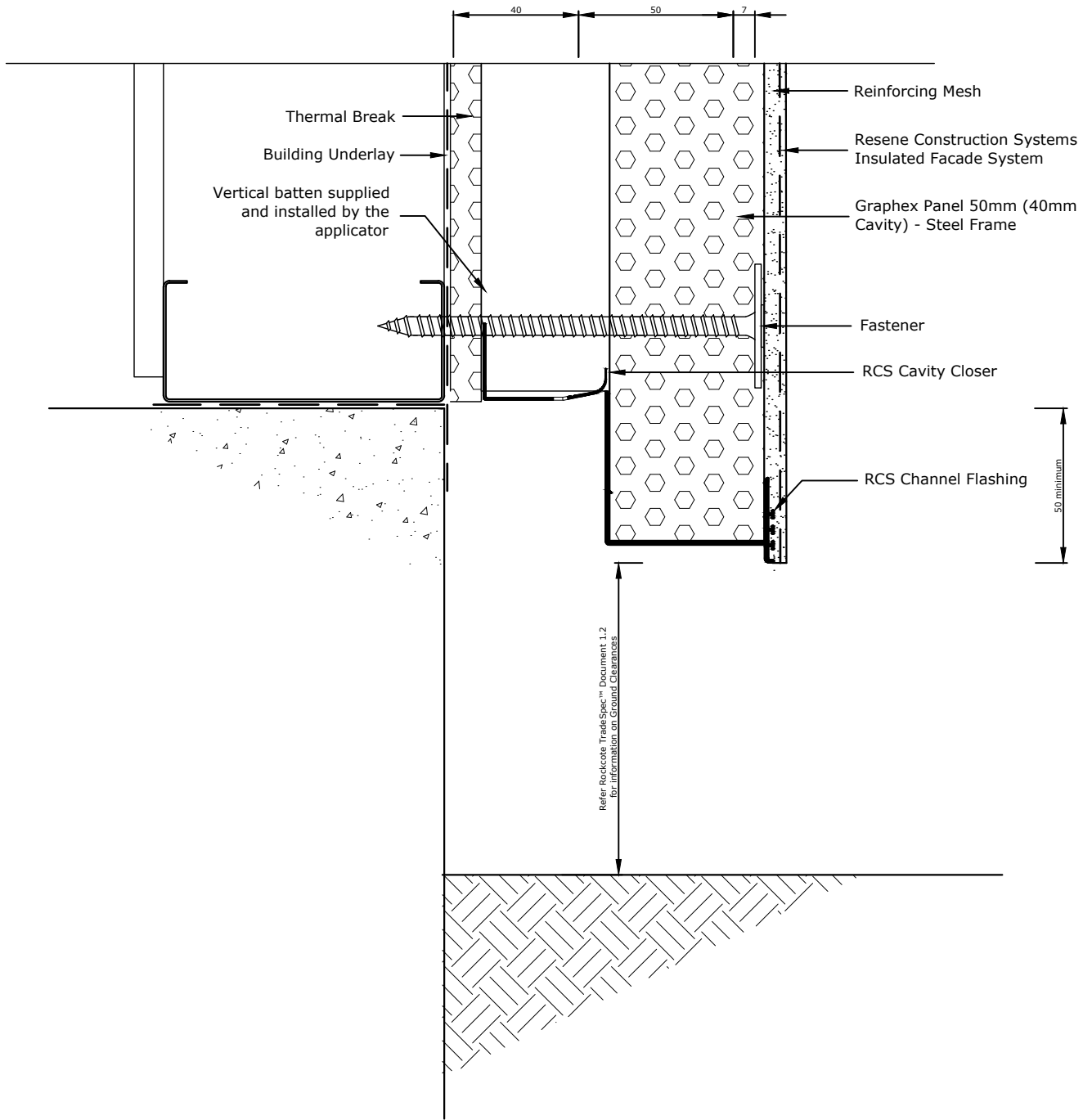
Substrate
Graphex Panel 50mm (40mm Cavity)
- Steel Frame

Drawing Name
Drawing Register

Scale
1 : 2 @ A4

Date
1 November 2017

Sheet
86.00.00



Refer TradeSpec™ Document 1.2 for information on Ground Clearances

TradeSpec™ and RenderSpec™ are Registered Trademarks, both Documents are available on the Resene Construction Systems

Resene 
Construction Systems

CONFIDENTIALITY: No part of this publication may be reproduced or transmitted other than the intended use by Resene Construction Systems without written consent from the author.

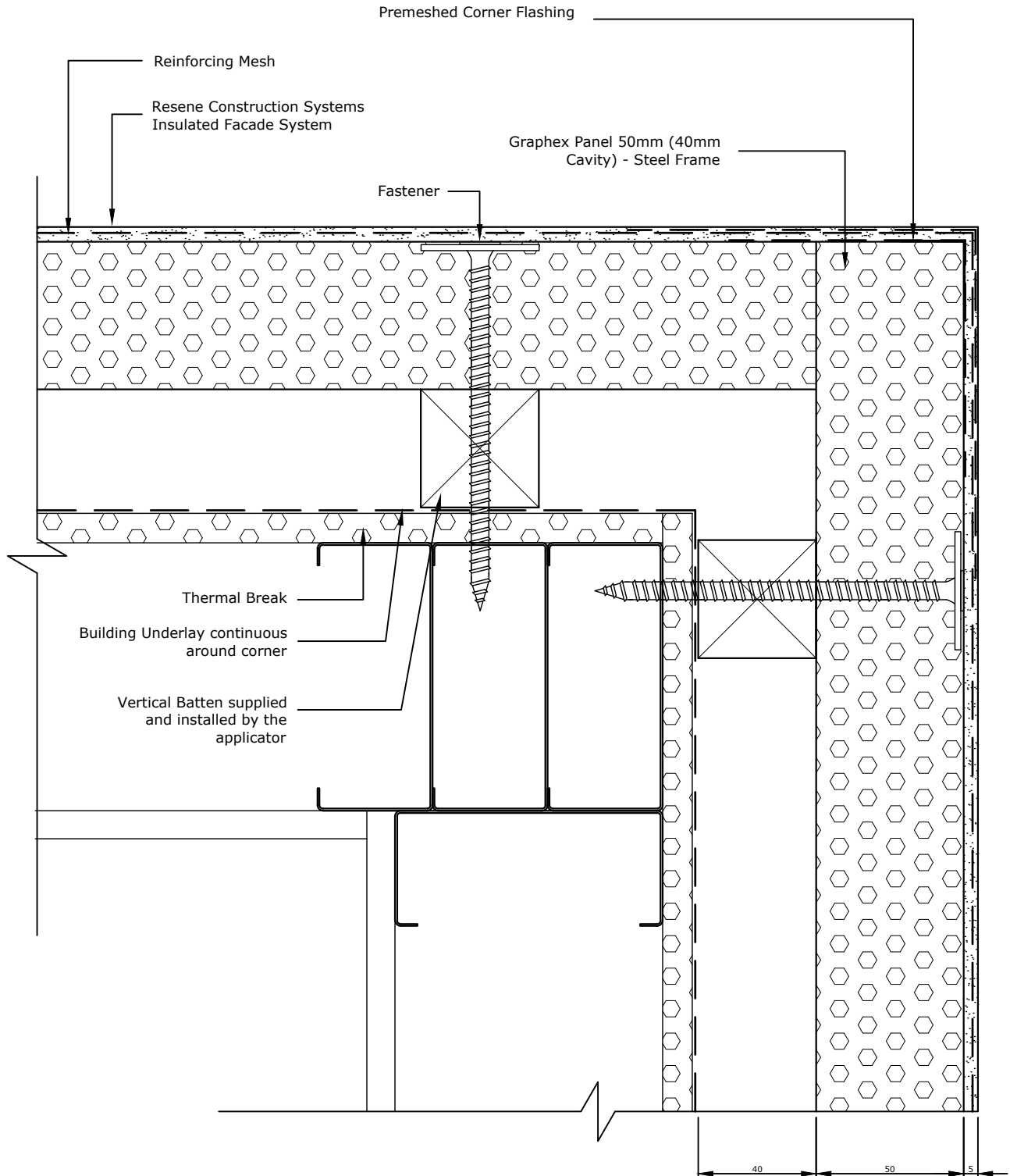
System
 Insulated Facade System

Substrate
 Graphex Panel 50mm (40mm Cavity)
 - Steel Frame
 Drawing Name
 Foundation

Scale
 1 : 2 @ A4

Date
 1 November 2017

Sheet
 86.02.00



TradeSpec™ and RenderSpec™ are Registered Trademarks, both Documents are available on the Resene Construction Systems



CONFIDENTIALITY: No part of this publication may be reproduced or transmitted other than the intended use by Resene Construction Systems without written consent from the author.

System
 Insulated Facade System

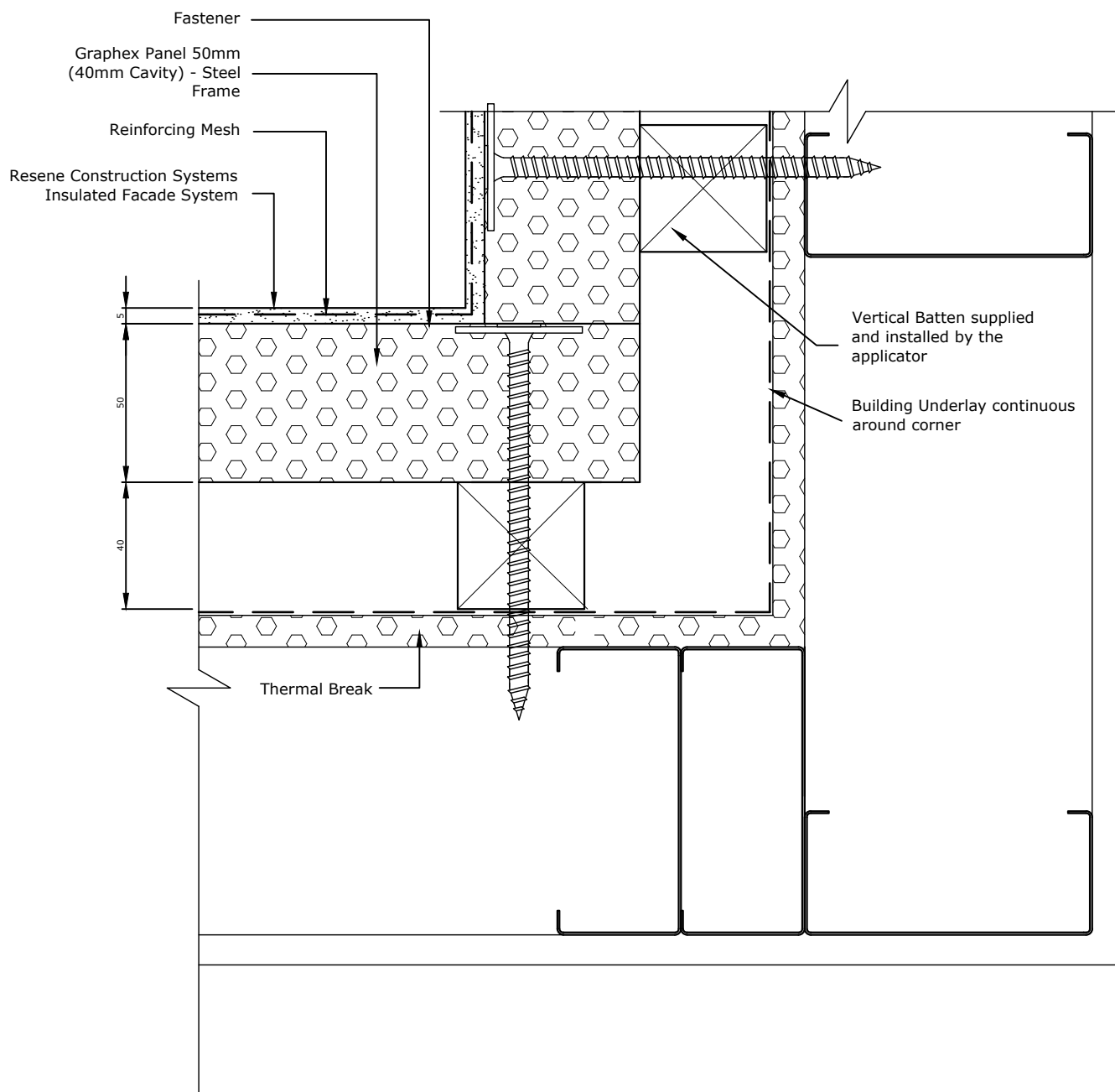
Substrate
 Graphex Panel 50mm (40mm Cavity)
 - Steel Frame

Drawing Name
 External Corner

Scale
 1 : 2 @ A4

Date
 1 November 2017

Sheet
 86.03.00



Mesh to be wrapped continuously around the internal corner, if there is a break in the mesh then an additional layer of Sticky Mesh must be used

TradeSpec™ and RenderSpec™ are Registered Trademarks, both Documents are available on the Resene Construction Systems

Resene 
Construction Systems

CONFIDENTIALITY: No part of this publication may be reproduced or transmitted other than the intended use by Resene Construction Systems without written consent from the author.

System
 Insulated Facade System

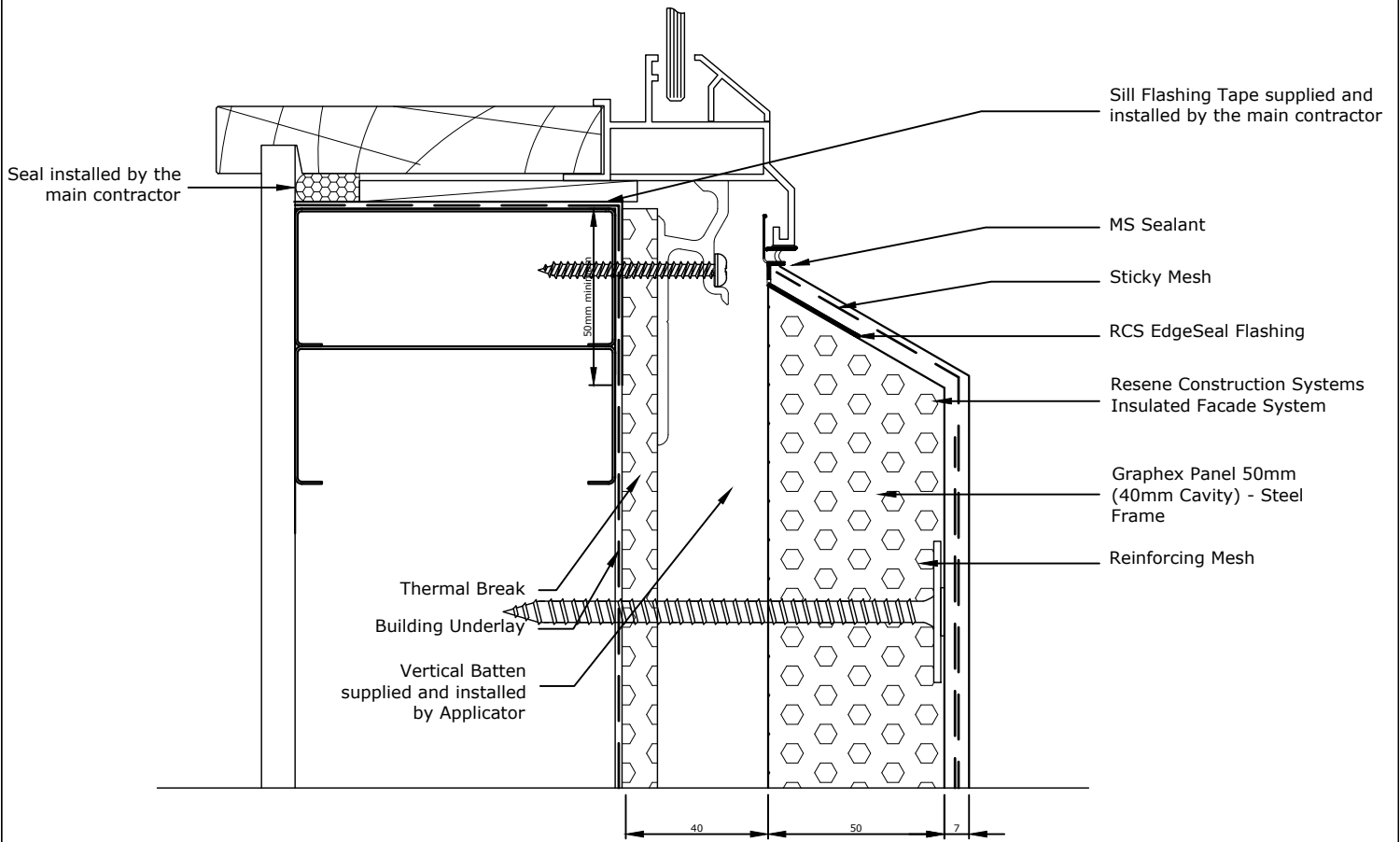
Substrate
 Graphex Panel 50mm (40mm Cavity)
 - Steel Frame

Drawing Name
 Internal Corner

Scale
 1 : 2 @ A4

Date
 1 November 2017

Sheet
 86.04.00



Allow a 25mm Gap between the back of the joinery and external facing timber framing to allow the sill flashing to fit.

TradeSpec™ and RenderSpec™ are Registered Trademarks, both Documents are available on the Resene Construction Systems

Resene 
Construction Systems

CONFIDENTIALITY: No part of this publication may be reproduced or transmitted other than the intended use by Resene Construction Systems without written consent from the author.

System
 Insulated Facade System

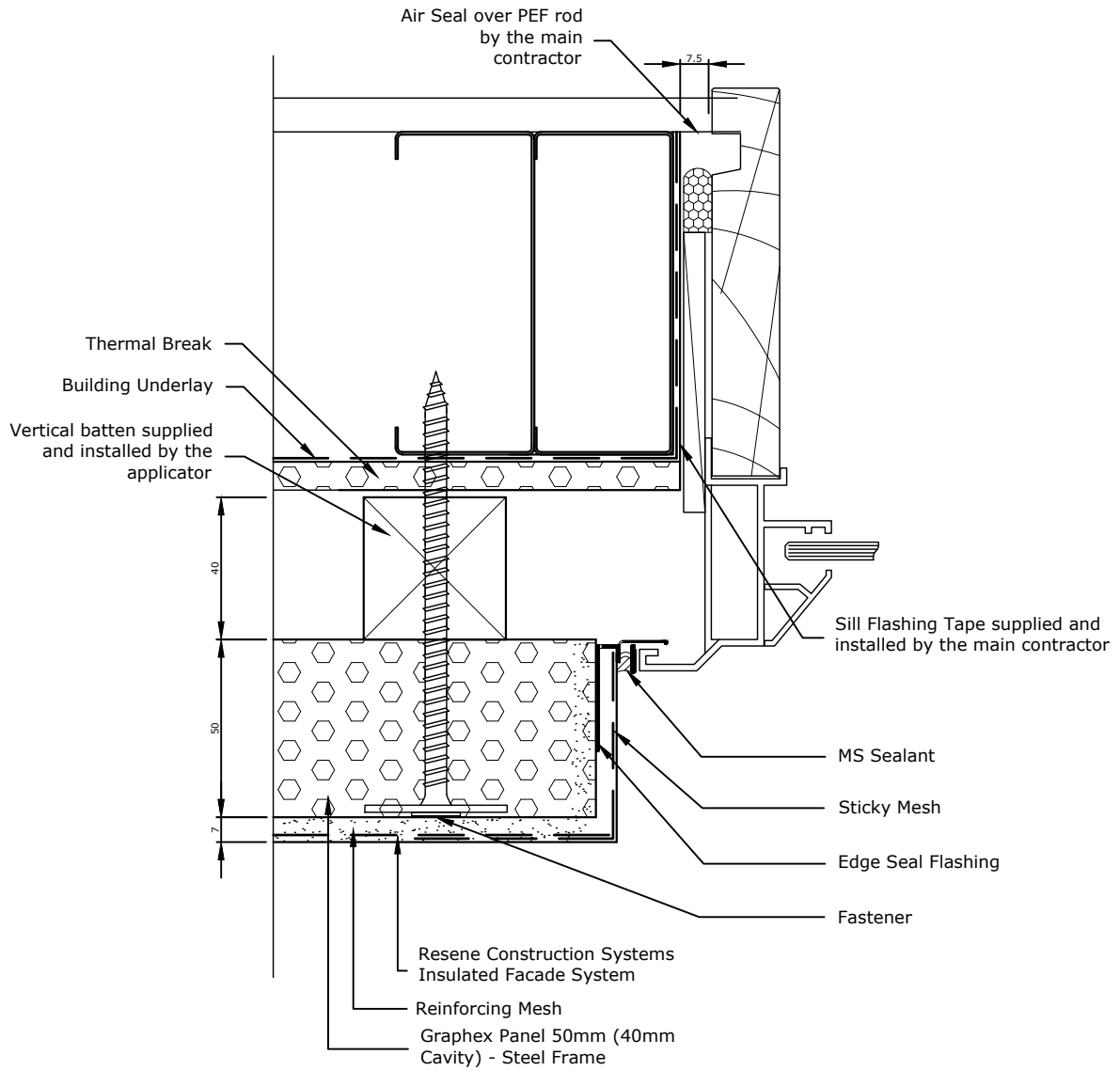
Substrate
 Graphex Panel 50mm (40mm Cavity)
 - Steel Frame

Drawing Name
 Window Sill

Scale
 1 : 2 @ A4

Date
 1 November 2017

Sheet
 86.05.00



Allow a 25mm Gap between the back of the joinery and external facing timber framing to allow the jamb flashing to fit.

TradeSpec™ and RenderSpec™ are Registered Trademarks, both Documents are available on the Resene Construction Systems

Resene 
Construction Systems

CONFIDENTIALITY: No part of this publication may be reproduced or transmitted other than the intended use by Resene Construction Systems without written consent from the author.

System
 Insulated Facade System

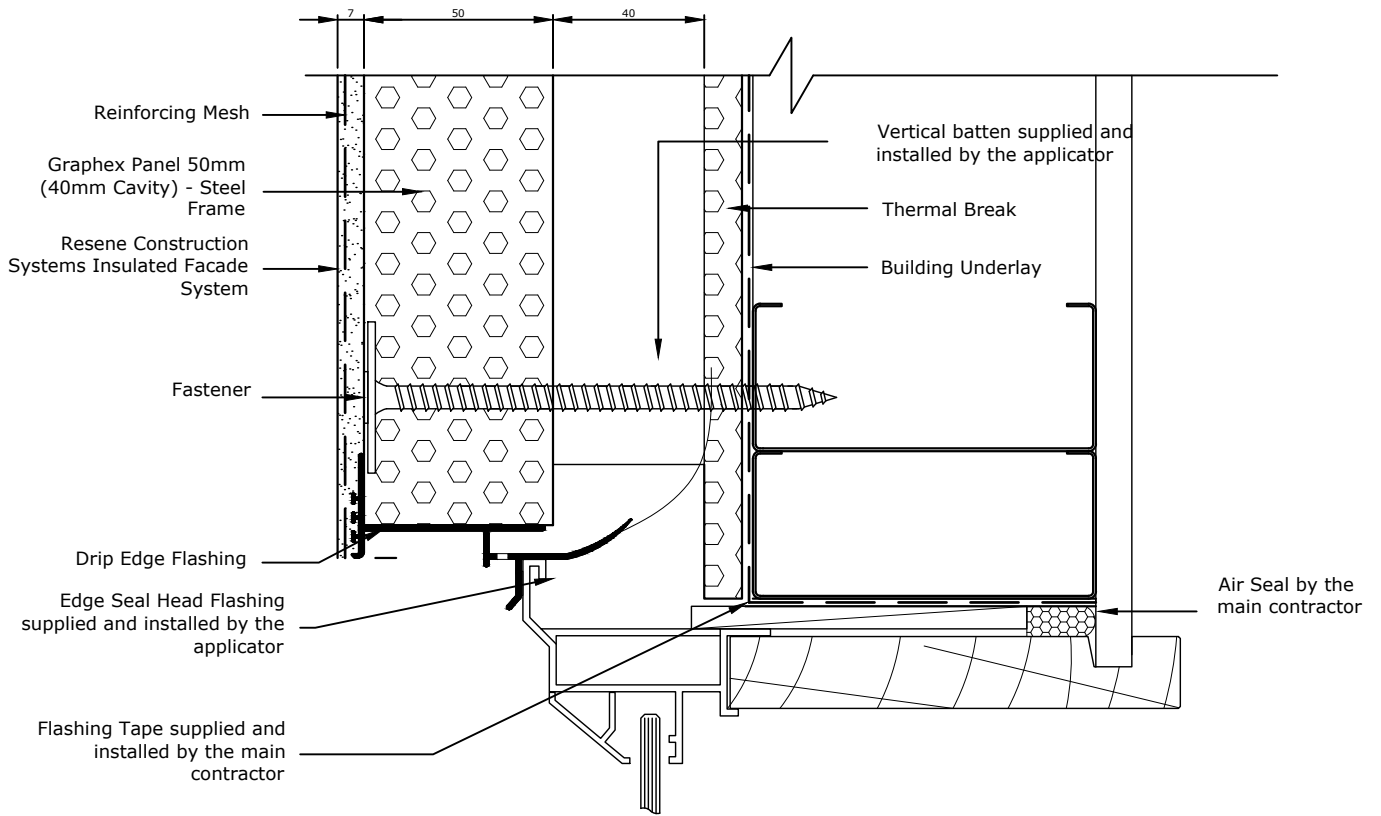
Substrate
 Graphex Panel 50mm (40mm Cavity)
 - Steel Frame

Drawing Name
 Window Jamb

Scale
 1 : 2 @ A4

Date
 1 November 2017

Sheet
 86.06.00



TradeSpec™ and RenderSpec™ are Registered Trademarks, both Documents are available on the Resene Construction Systems

Resene 
Construction Systems

CONFIDENTIALITY: No part of this publication may be reproduced or transmitted other than the intended use by Resene Construction Systems without written consent from the author.

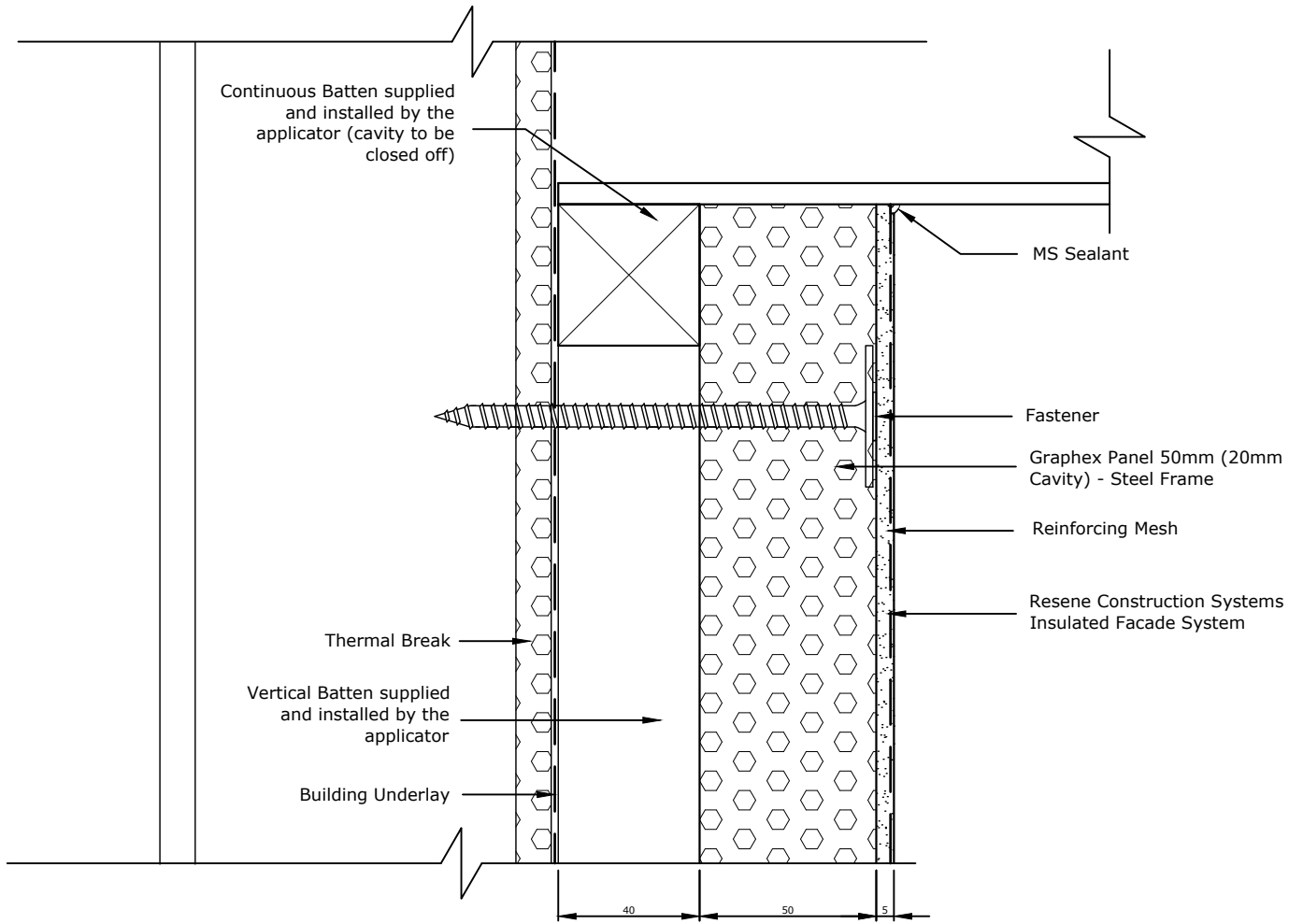
System
 Insulated Facade System

Substrate
 Graphex Panel 50mm (40mm Cavity)
 - Steel Frame
 Drawing Name
 Window Head

Scale
 1 : 2 @ A4

Date
 1 November 2017

Sheet
 86.07.00



TradeSpec™ and RenderSpec™ are Registered Trademarks, both Documents are available on the Resene Construction Systems

Resene
Construction Systems

CONFIDENTIALITY: No part of this publication may be reproduced or transmitted other than the intended use by Resene Construction Systems without written consent from the author.

System
Insulated Facade System

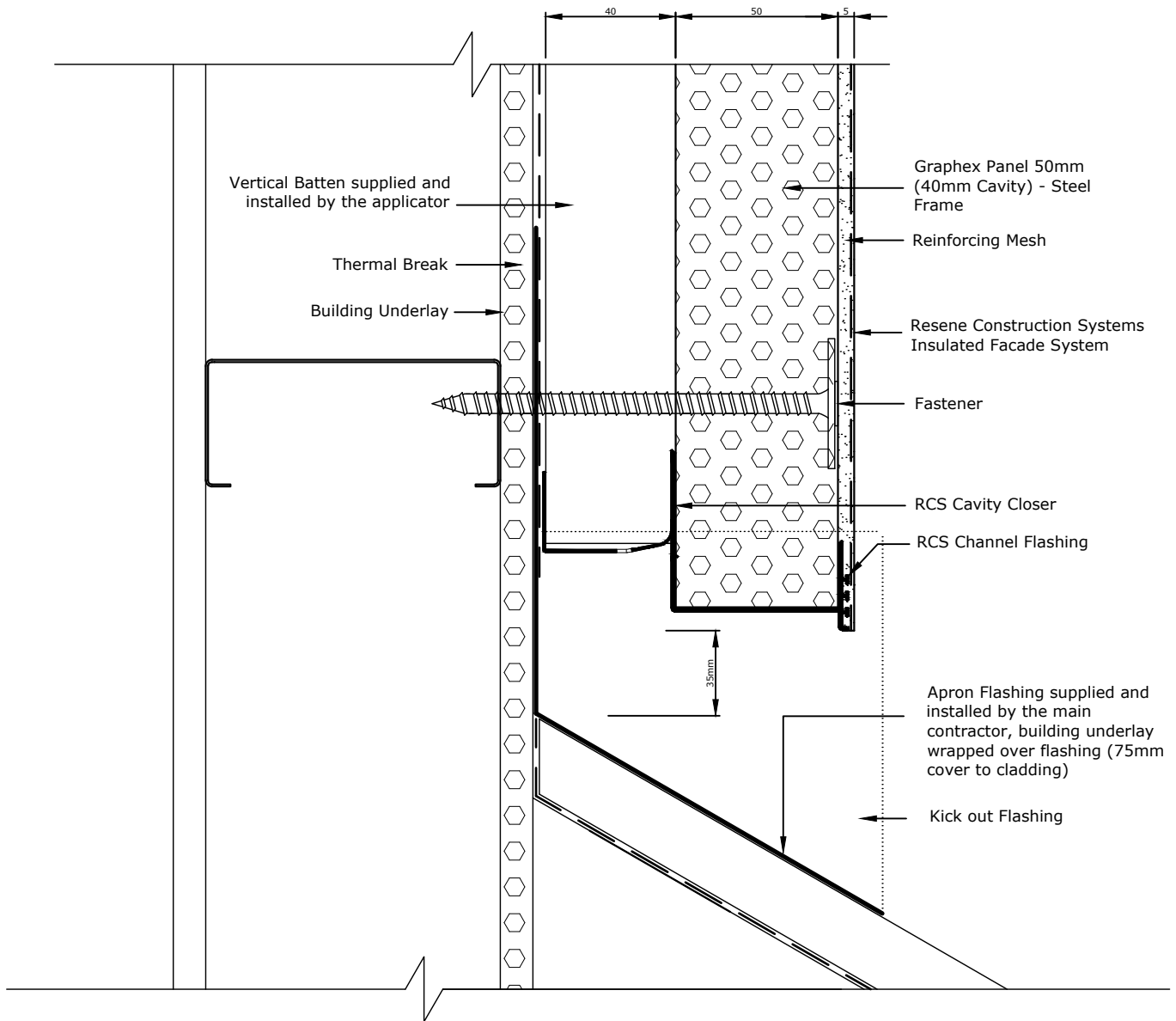
Substrate
Graphex Panel 50mm (40mm Cavity)
- Steel Frame

Drawing Name
Soffit

Scale
1 : 2 @ A4

Date
1 November 2017

Sheet
86.08.00



TradeSpec™ and RenderSpec™ are Registered Trademarks, both Documents are available on the Resene Construction Systems

Resene 
Construction Systems

CONFIDENTIALITY: No part of this publication may be reproduced or transmitted other than the intended use by Resene Construction Systems without written consent from the author.

System
 Insulated Facade System

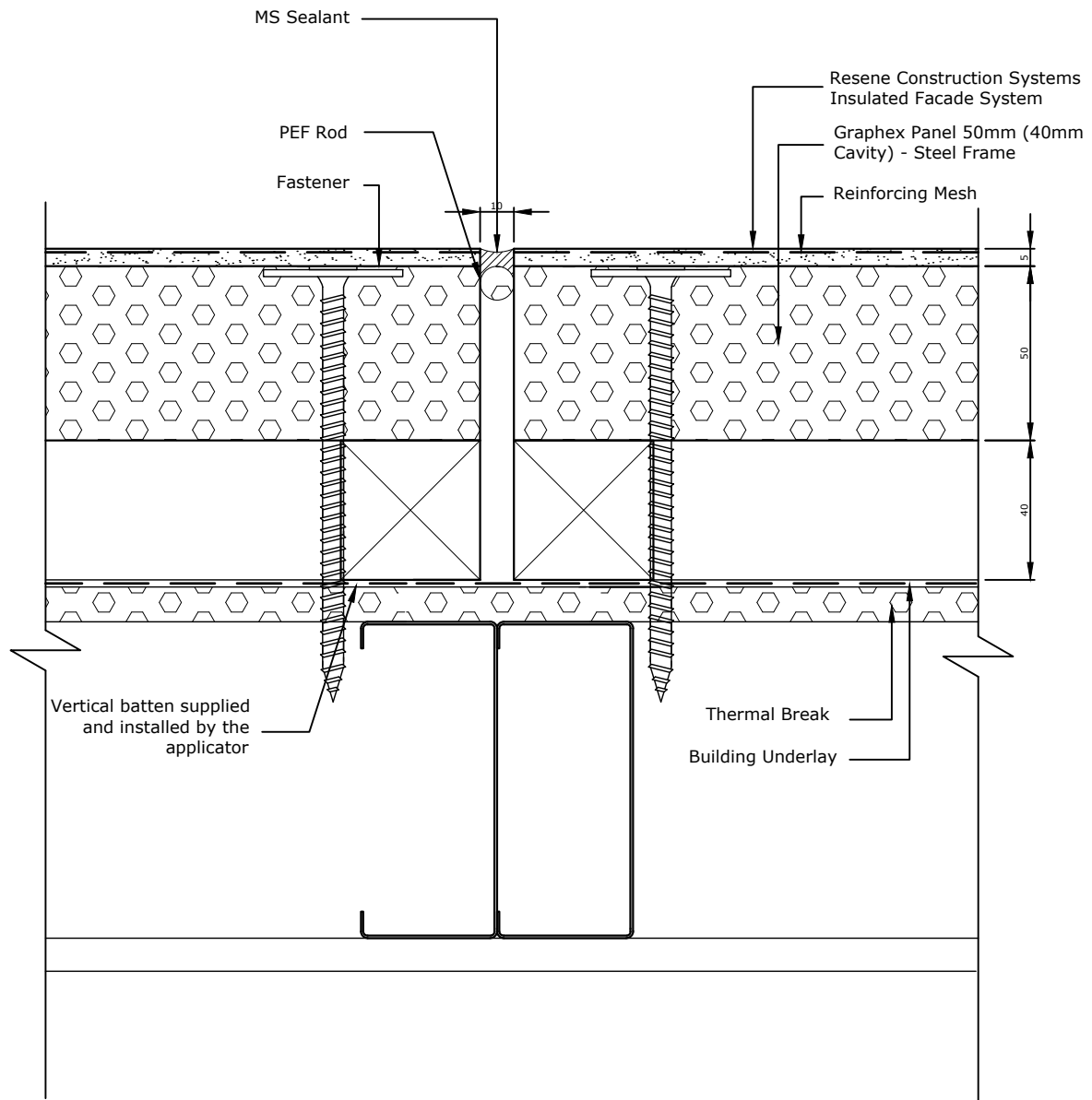
Substrate
 Graphex Panel 50mm (40mm Cavity)
 - Steel Frame

Drawing Name
 Roof Apron

Scale
 1 : 2 @ A4

Date
 1 November 2017

Sheet
 86.09.00



All Control Joint spacings and setouts are the responsibility of the Designer, for suggested locations refer to TradeSpec™ Document 1.4

TradeSpec™ and RenderSpec™ are Registered Trademarks, both Documents are available on the Resene Construction Systems

Resene 
Construction Systems

CONFIDENTIALITY: No part of this publication may be reproduced or transmitted other than the intended use by Resene Construction Systems without written consent from the author.

System
 Insulated Facade System

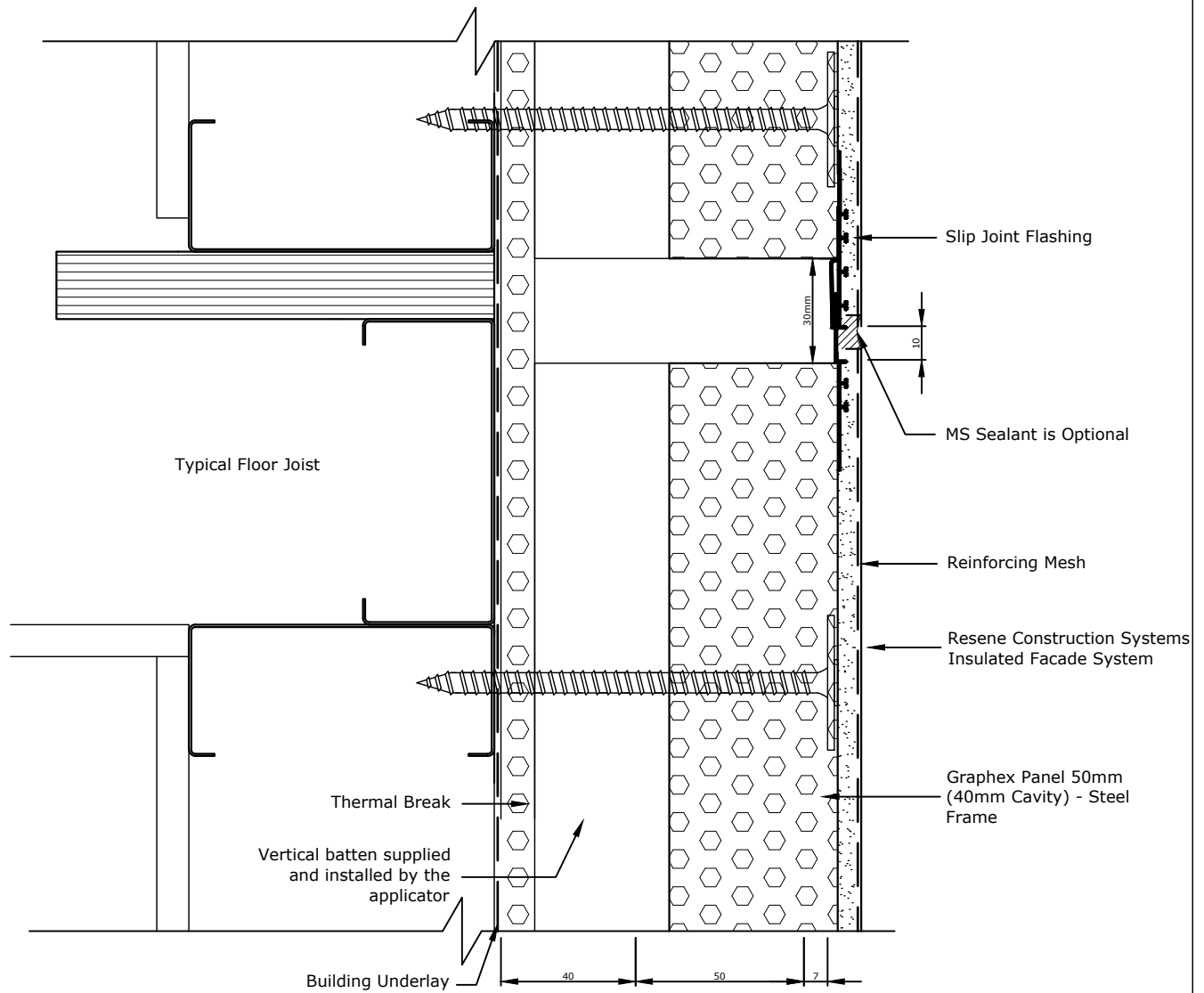
Substrate
 Graphex Panel 50mm (40mm Cavity)
 - Steel Frame

Drawing Name
 Vertical Control Joint

Scale
 1 : 2 @ A4

Date
 1 November 2017

Sheet
 86.10.00



Please note that there should be no fixings into the floor joists, the substrate should be left floating over this point.

All Control Joint spacings and setouts are the responsibility of the Designer, for suggested locations refer to TradeSpec™ Document 1.4 for suggested locations

TradeSpec™ and RenderSpec™ are Registered Trademarks, both Documents are available on the Resene Construction Systems

Resene 
Construction Systems

CONFIDENTIALITY: No part of this publication may be reproduced or transmitted other than the intended use by Resene Construction Systems without written consent from the author.

System
 Insulated Facade System

Substrate
 Graphex Panel 50mm (40mm Cavity)
 - Steel Frame

Drawing Name
 Horizontal Control Joint

Scale
 1 : 2 @ A4

Date
 1 November 2017

Sheet
 86.11.00