

Sheet List Table	
Sheet Number	Sheet Title
81.02.00	Foundation
81.03.00	External Corner
81.04.00	Internal Corner
81.05.00	Window Sill
81.06.00	Window Jamb
81.07.00	Window Head
81.08.00	Soffit
81.09.00	Roof Apron
81.10.00	Vertical Control Joint
81.11.00	Horizontal Control Joint

TradeSpec™ and RenderSpec™ are Registered Trademarks, both Documents are available on the Resene Construction Systems



CONFIDENTIALITY: No part of this publication may be reproduced or transmitted other than the intended use by Resene Construction Systems without written consent from the author.

System
Insulated Facade System

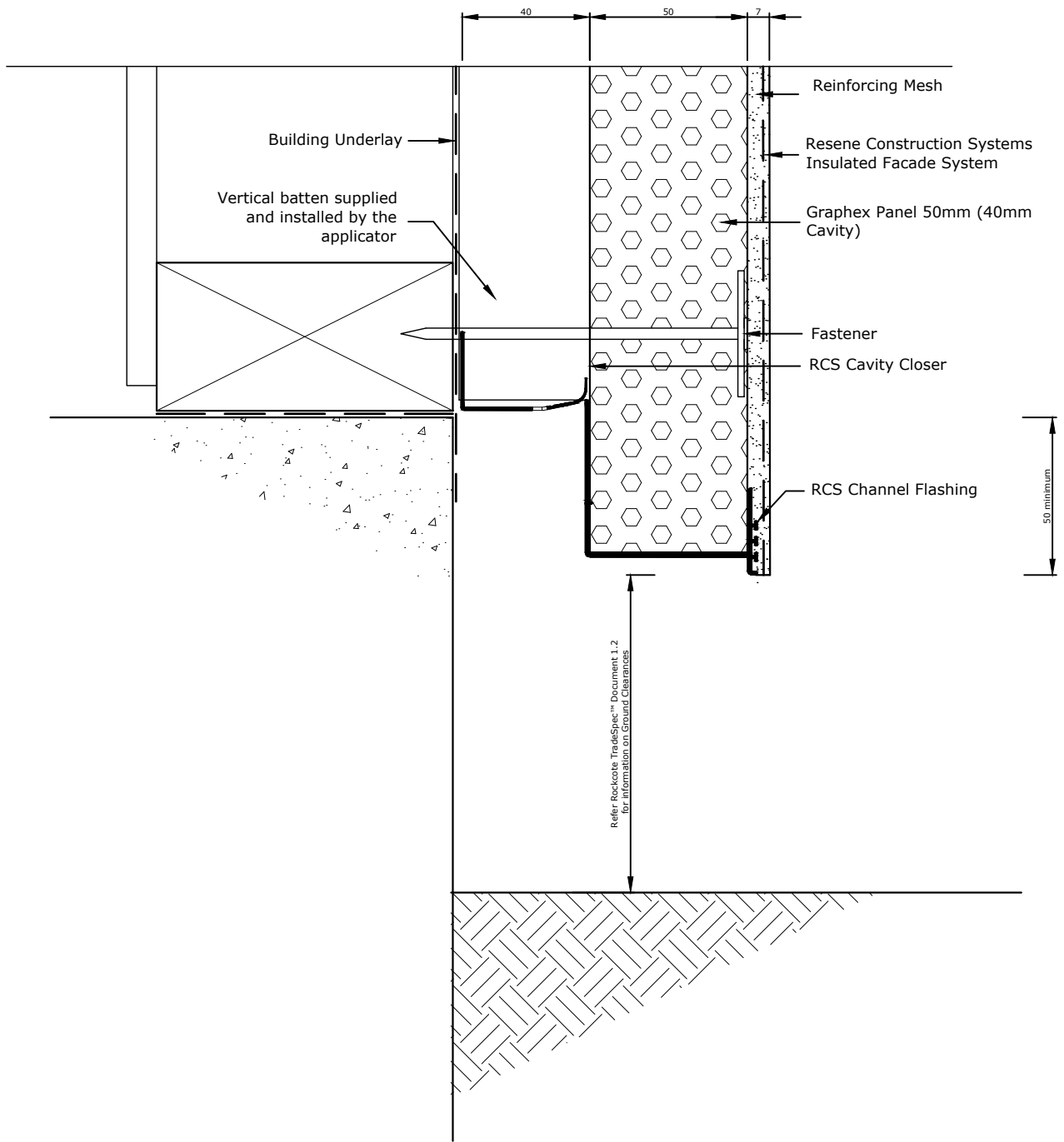
Substrate
Graphex Panel 50mm (40mm Cavity)

Drawing Name
Drawing Register

Scale
1 : 2 @ A4

Date
1 November 2017

Sheet
81.00.00



Refer TradeSpec™ Document 1.2 for information on Ground Clearances

TradeSpec™ and RenderSpec™ are Registered Trademarks, both Documents are available on the Resene Construction Systems

Resene 
Construction Systems

CONFIDENTIALITY: No part of this publication may be reproduced or transmitted other than the intended use by Resene Construction Systems without written consent from the author.

System
 Insulated Facade System

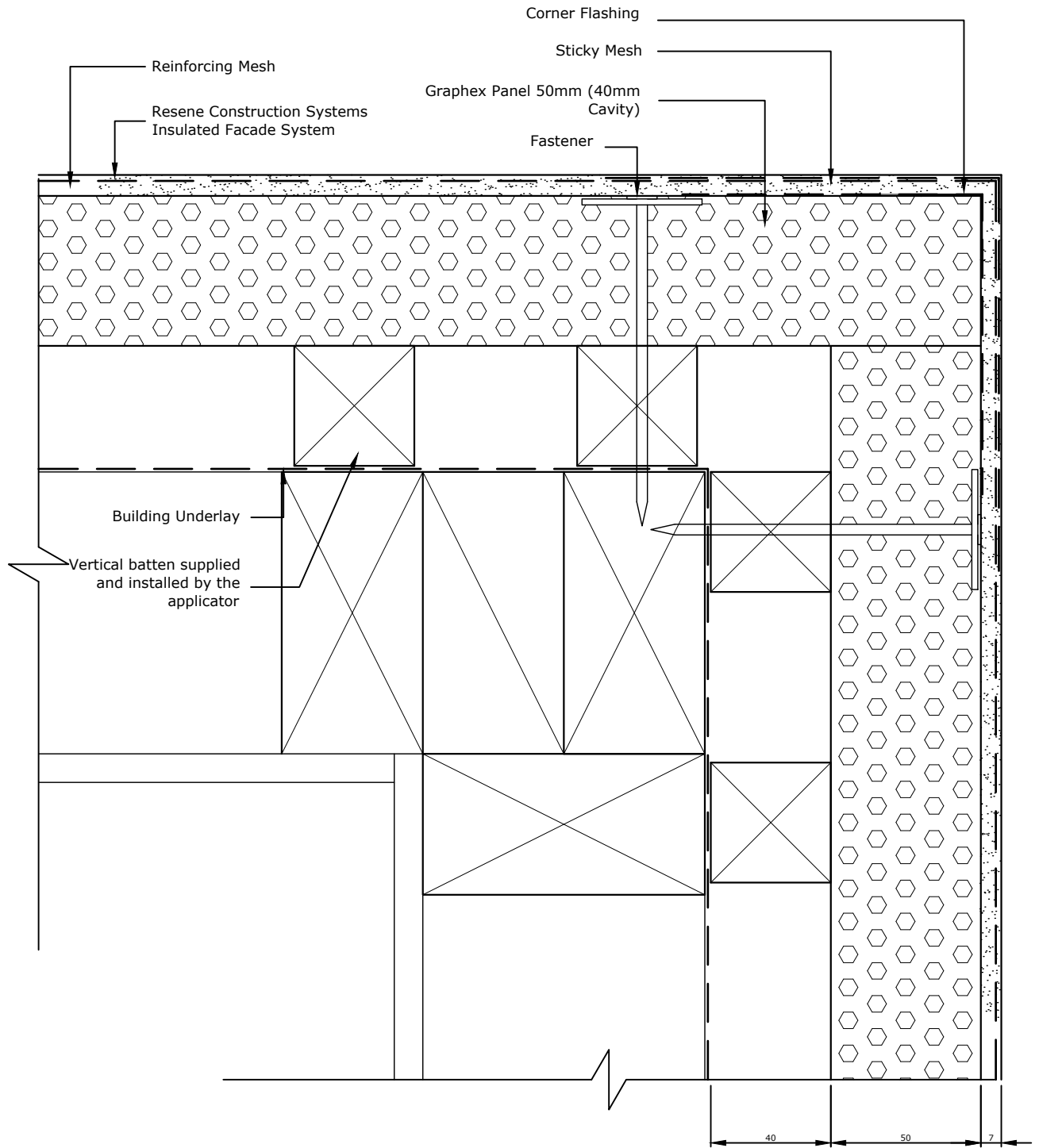
Substrate
 Graphex Panel 50mm (40mm Cavity)

Drawing Name
 Foundation

Scale
 1 : 2 @ A4

Date
 1 November 2017

Sheet
 81.02.00



TradeSpec™ and RenderSpec™ are Registered Trademarks, both Documents are available on the Resene Construction Systems

Resene 
Construction Systems

CONFIDENTIALITY: No part of this publication may be reproduced or transmitted other than the intended use by Resene Construction Systems without written consent from the author.

System
 Insulated Facade System

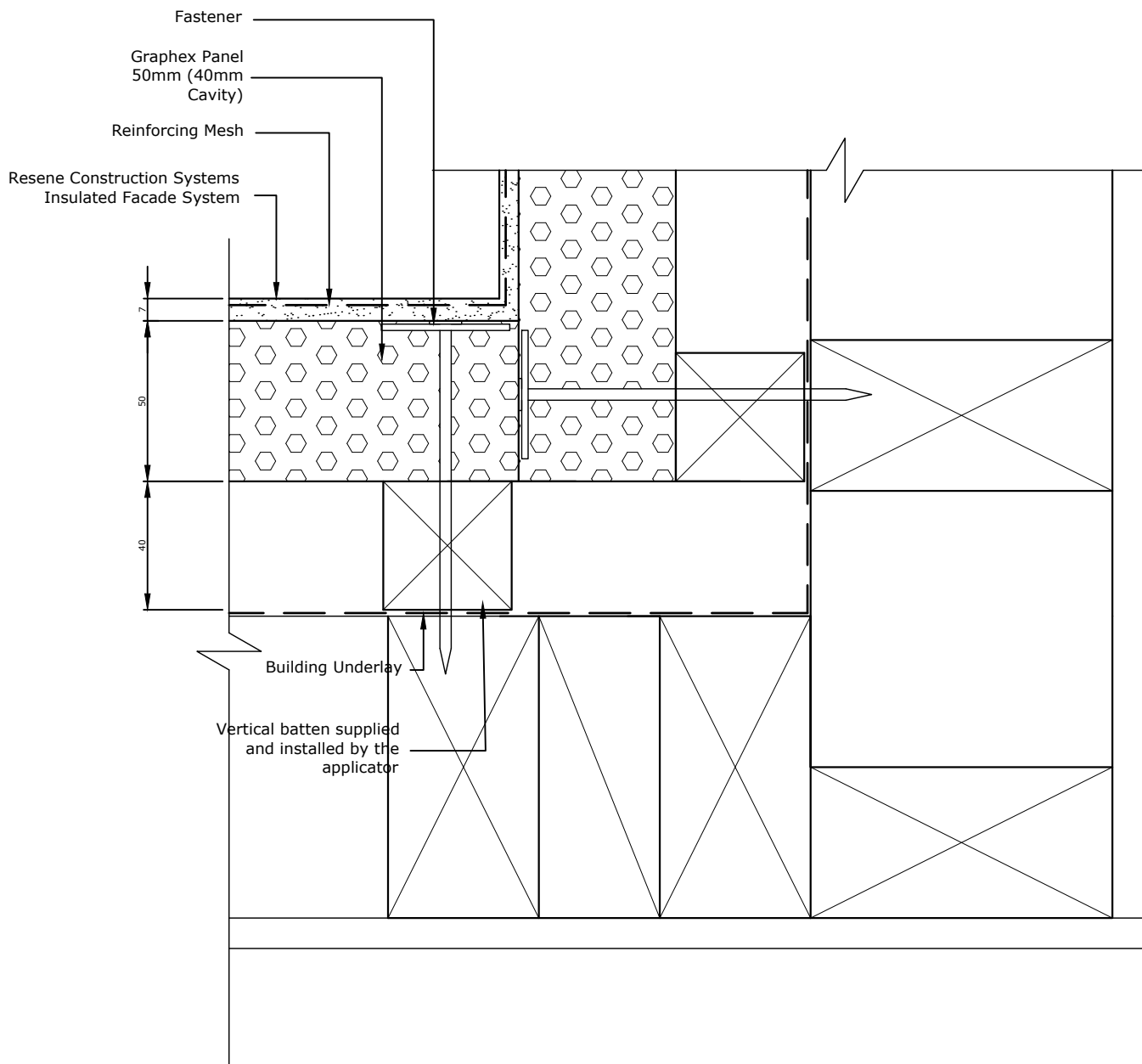
Substrate
 Graphex Panel 50mm (40mm Cavity)

Drawing Name
 External Corner

Scale
 1 : 2 @ A4

Date
 1 November 2017

Sheet
 81.03.00



TradeSpec™ and RenderSpec™ are Registered Trademarks, both Documents are available on the Resene Construction Systems

Resene 
Construction Systems

CONFIDENTIALITY: No part of this publication may be reproduced or transmitted other than the intended use by Resene Construction Systems without written consent from the author.

System
Insulated Facade System

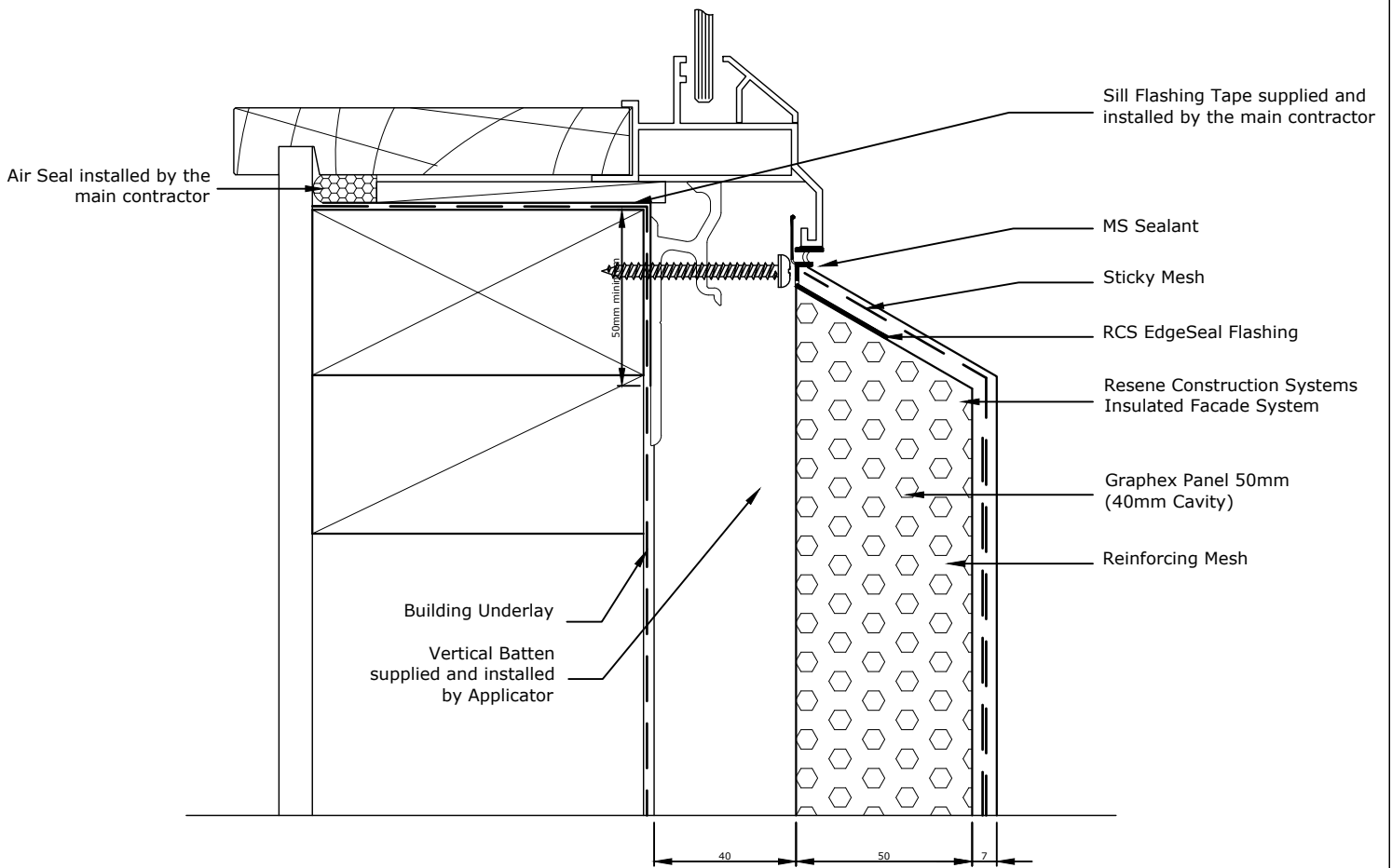
Substrate
Graphex Panel 50mm (40mm Cavity)

Drawing Name
Internal Corner

Scale
1 : 2 @ A4

Date
1 November 2017

Sheet
81.04.00



Allow a 25mm Gap between the back of the joinery and external facing timber framing to allow the sill flashing to fit.

TradeSpec™ and RenderSpec™ are Registered Trademarks, both Documents are available on the Resene Construction Systems

Resene 
Construction Systems

CONFIDENTIALITY: No part of this publication may be reproduced or transmitted other than the intended use by Resene Construction Systems without written consent from the author.

System
 Insulated Facade System

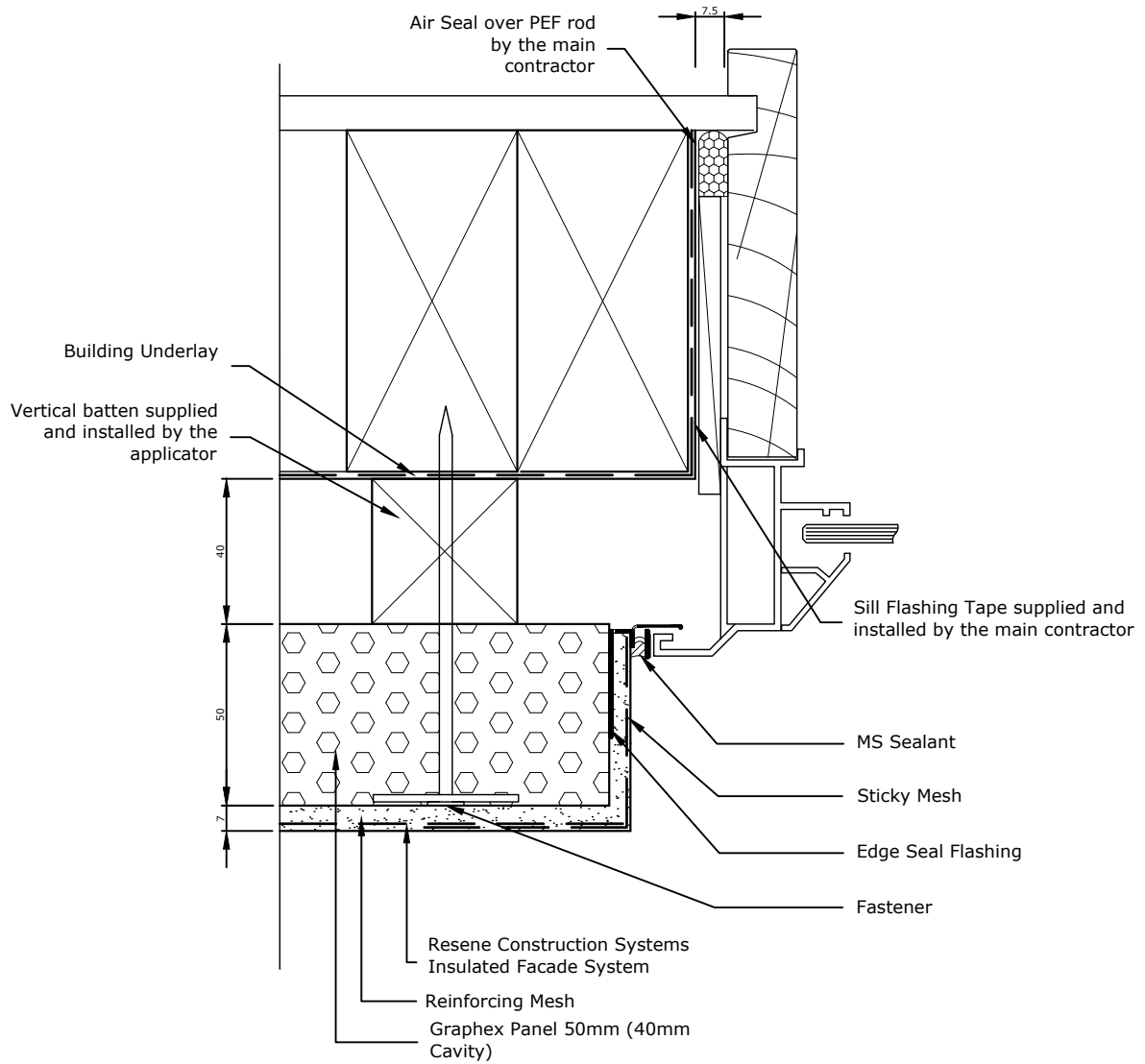
Substrate
 Graphex Panel 50mm (40mm Cavity)

Drawing Name
 Window Sill

Scale
 1 : 2 @ A4

Date
 1 November 2017

Sheet
 81.05.00



Allow a 25mm Gap between the back of the joinery and external facing timber framing to allow the jamb flashing to fit.

TradeSpec™ and RenderSpec™ are Registered Trademarks, both Documents are available on the Resene Construction Systems

Resene 
Construction Systems

CONFIDENTIALITY: No part of this publication may be reproduced or transmitted other than the intended use by Resene Construction Systems without written consent from the author.

System
 Insulated Facade System

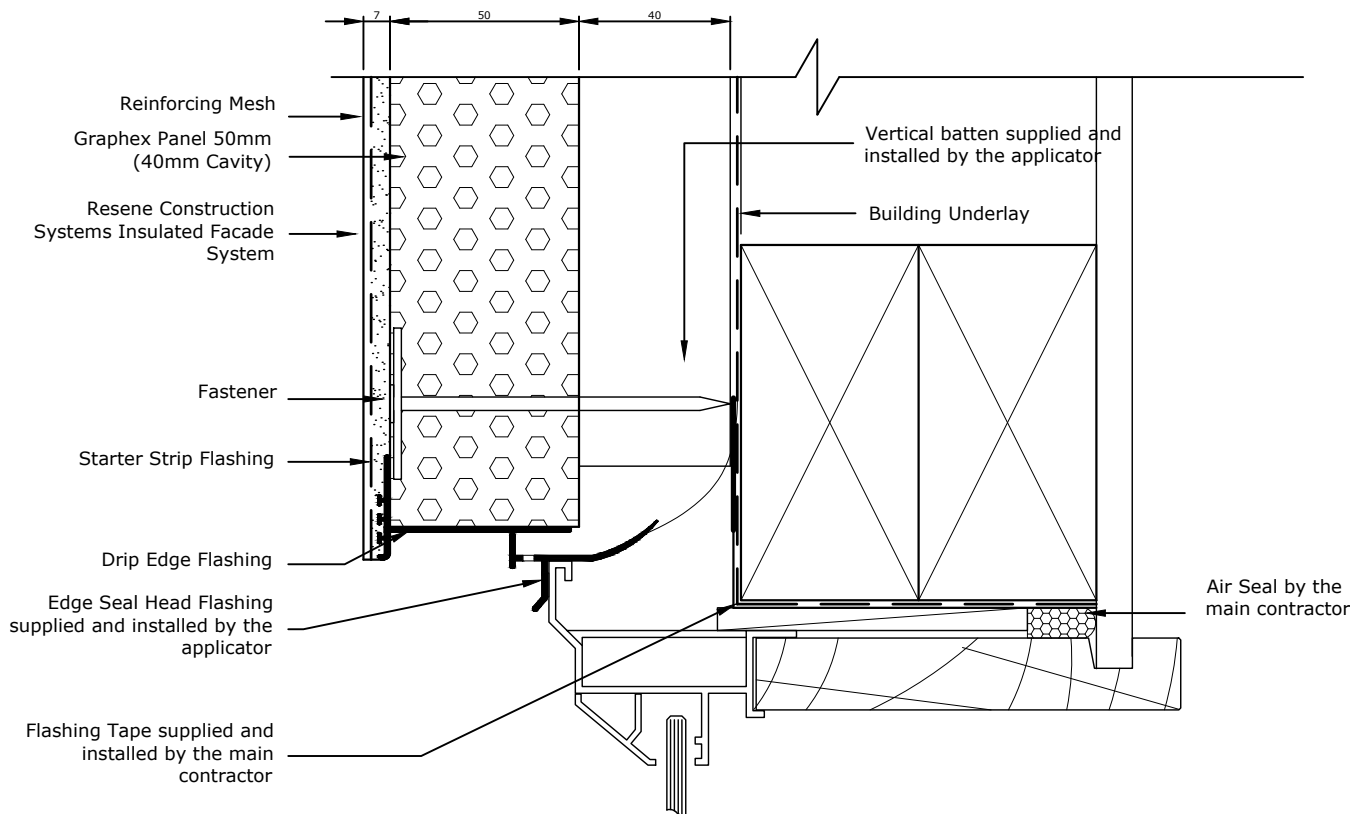
Substrate
 Graphex Panel 50mm (40mm Cavity)

Drawing Name
 Window Jamb

Scale
 1 : 2 @ A4

Date
 1 November 2017

Sheet
 81.06.00



TradeSpec™ and RenderSpec™ are Registered Trademarks, both Documents are available on the Resene Construction Systems

Resene 
Construction Systems

CONFIDENTIALITY: No part of this publication may be reproduced or transmitted other than the intended use by Resene Construction Systems without written consent from the author.

System
 Insulated Facade System

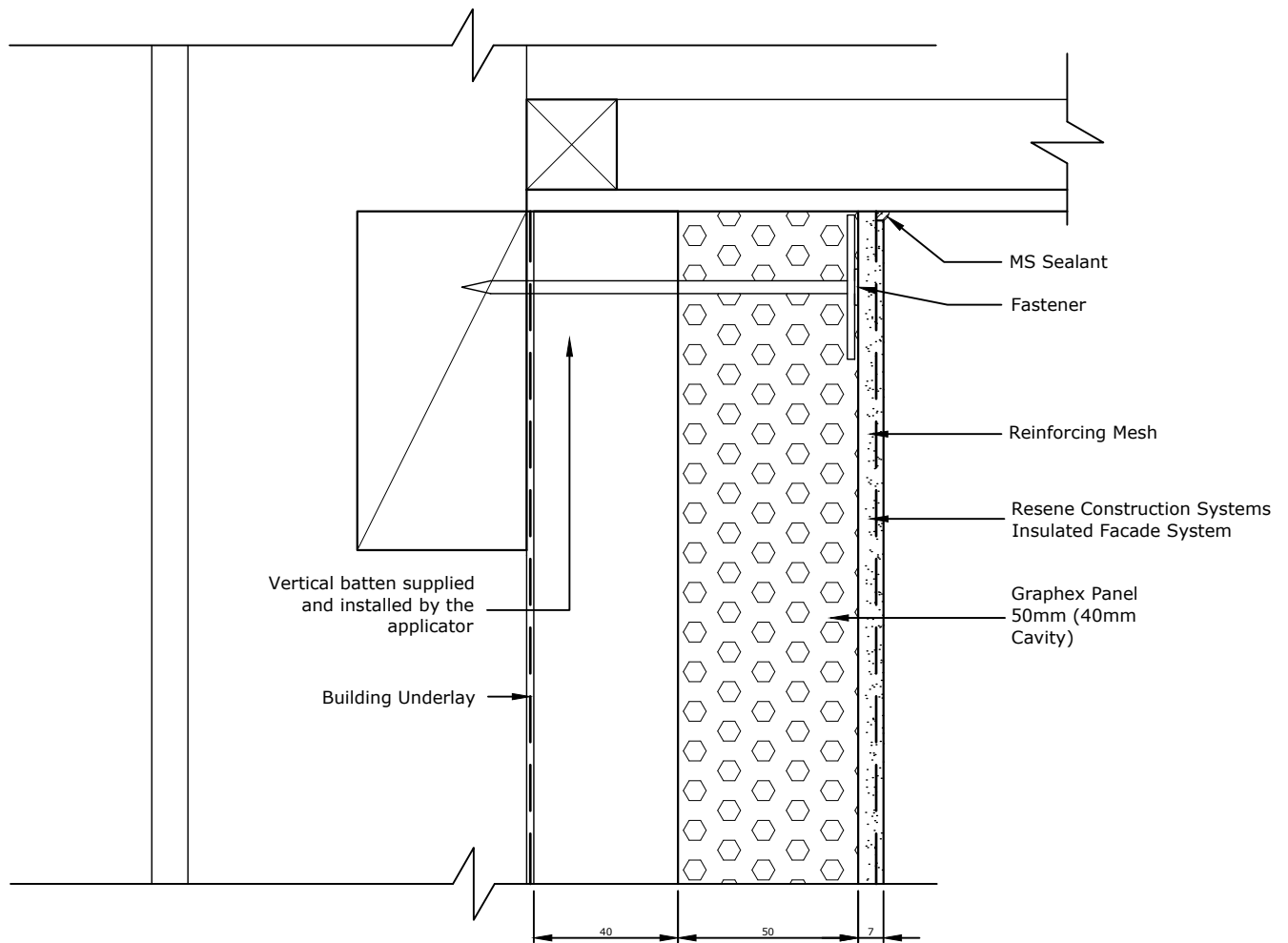
Substrate
 Graphex Panel 50mm (40mm Cavity)

Drawing Name
 Window Head

Scale
 1 : 2 @ A4

Date
 1 November 2017

Sheet
 81.07.00



TradeSpec™ and RenderSpec™ are Registered Trademarks, both Documents are available on the Resene Construction Systems

Resene 
Construction Systems

CONFIDENTIALITY: No part of this publication may be reproduced or transmitted other than the intended use by Resene Construction Systems without written consent from the author.

System
 Insulated Facade System

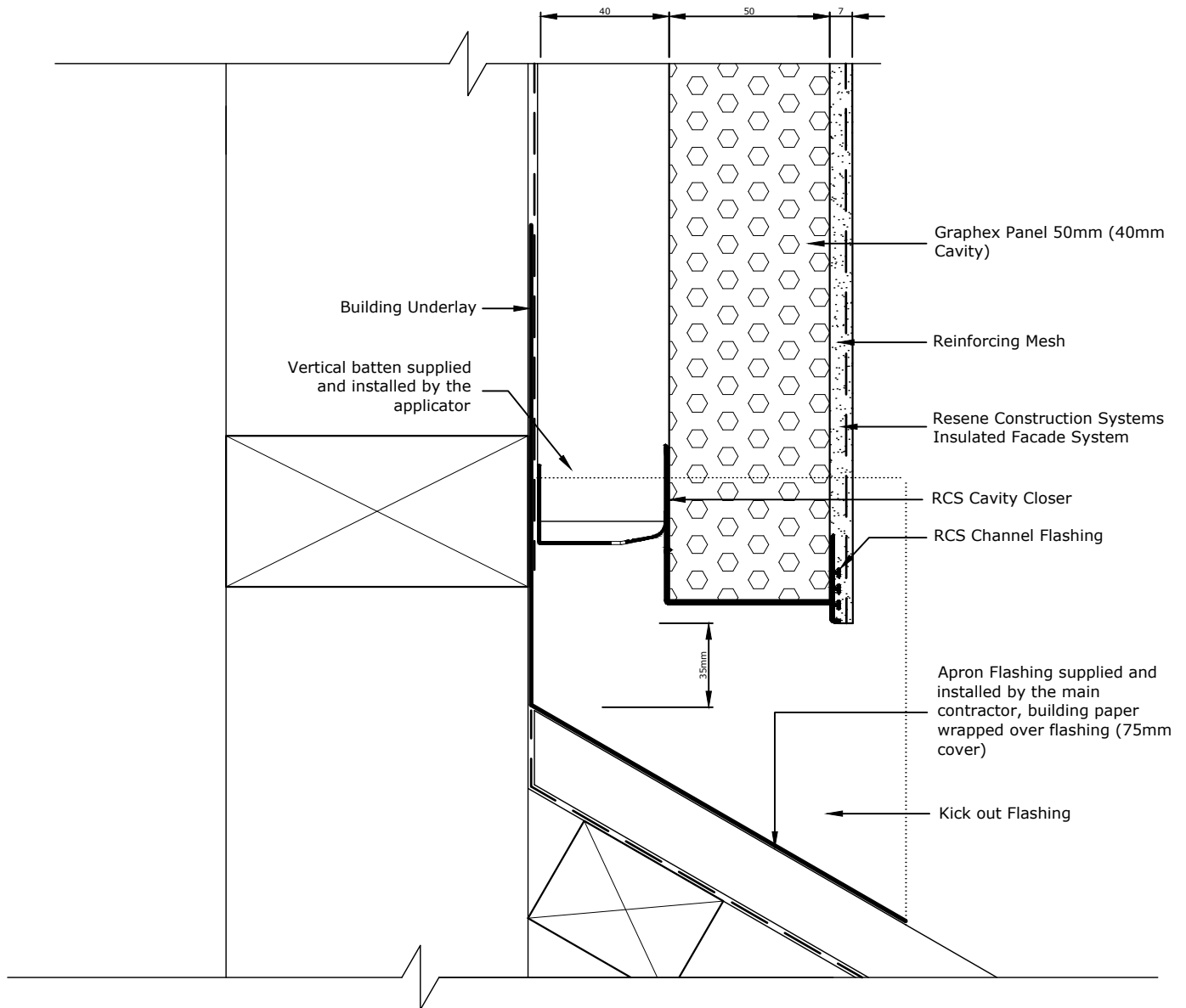
Substrate
 Graphex Panel 50mm (40mm Cavity)

Drawing Name
 Soffit

Scale
 1 : 2 @ A4

Date
 1 November 2017

Sheet
 81.08.00



Refer TradeSpec™ Document 1.2 for information on Roof Clearances

Metal flashing must be taped to the Building Underlay by the main contractor/window installer

TradeSpec™ and RenderSpec™ are Registered Trademarks, both Documents are available on the Resene Construction Systems

Resene 
Construction Systems

CONFIDENTIALITY: No part of this publication may be reproduced or transmitted other than the intended use by Resene Construction Systems without written consent from the author.

System
 Insulated Facade System

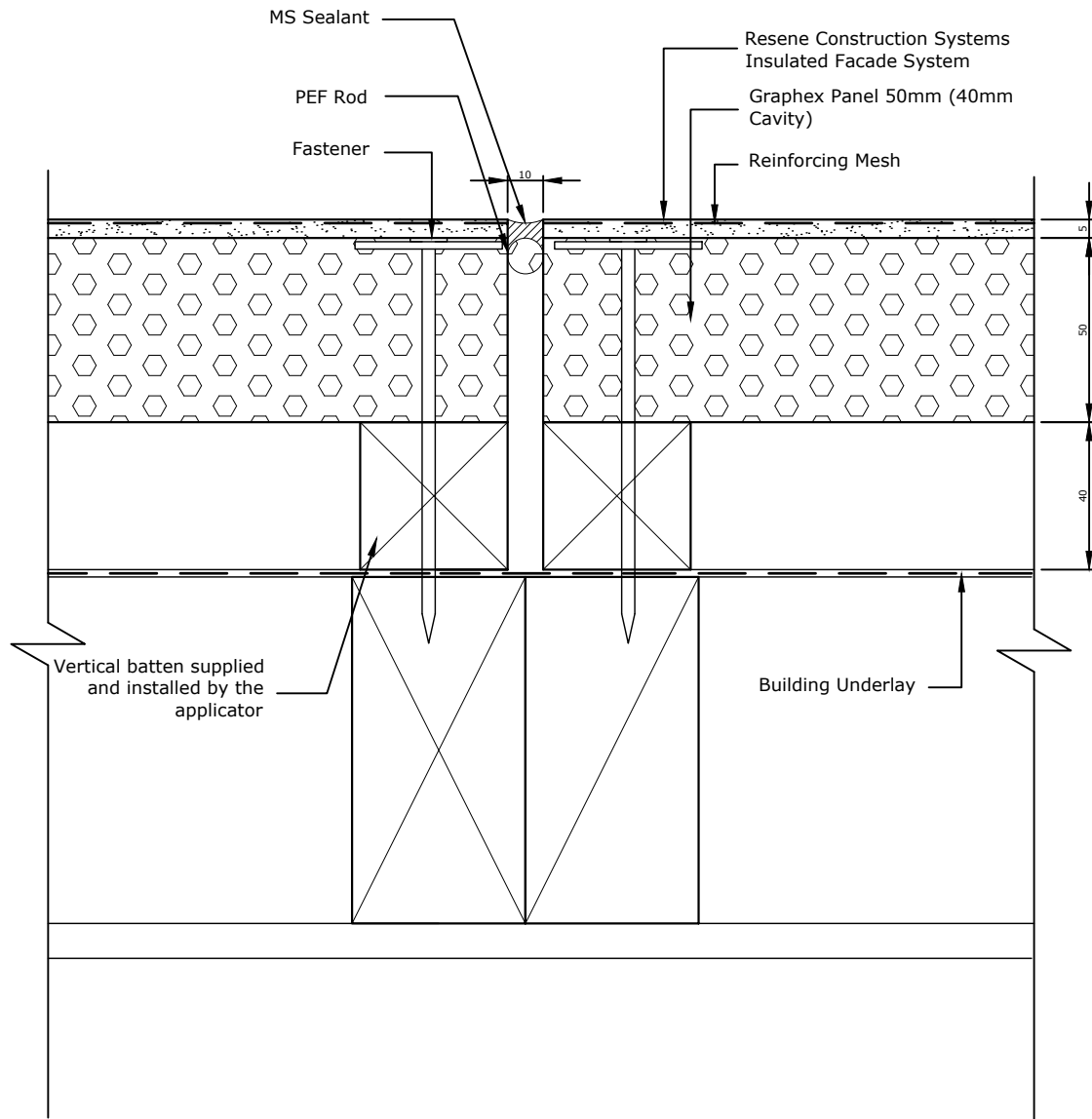
Substrate
 Graphex Panel 50mm (40mm Cavity)

Drawing Name
 Roof Apron

Scale
 1 : 2 @ A4

Date
 1 November 2017

Sheet
 81.09.00



All Control Joint spacings and setouts are the responsibility of the Designer, for suggested locations refer to TradeSpec™ Document 1.4

TradeSpec™ and RenderSpec™ are Registered Trademarks, both Documents are available on the Resene Construction Systems

Resene 
Construction Systems

CONFIDENTIALITY: No part of this publication may be reproduced or transmitted other than the intended use by Resene Construction Systems without written consent from the author.

System
 Insulated Facade System

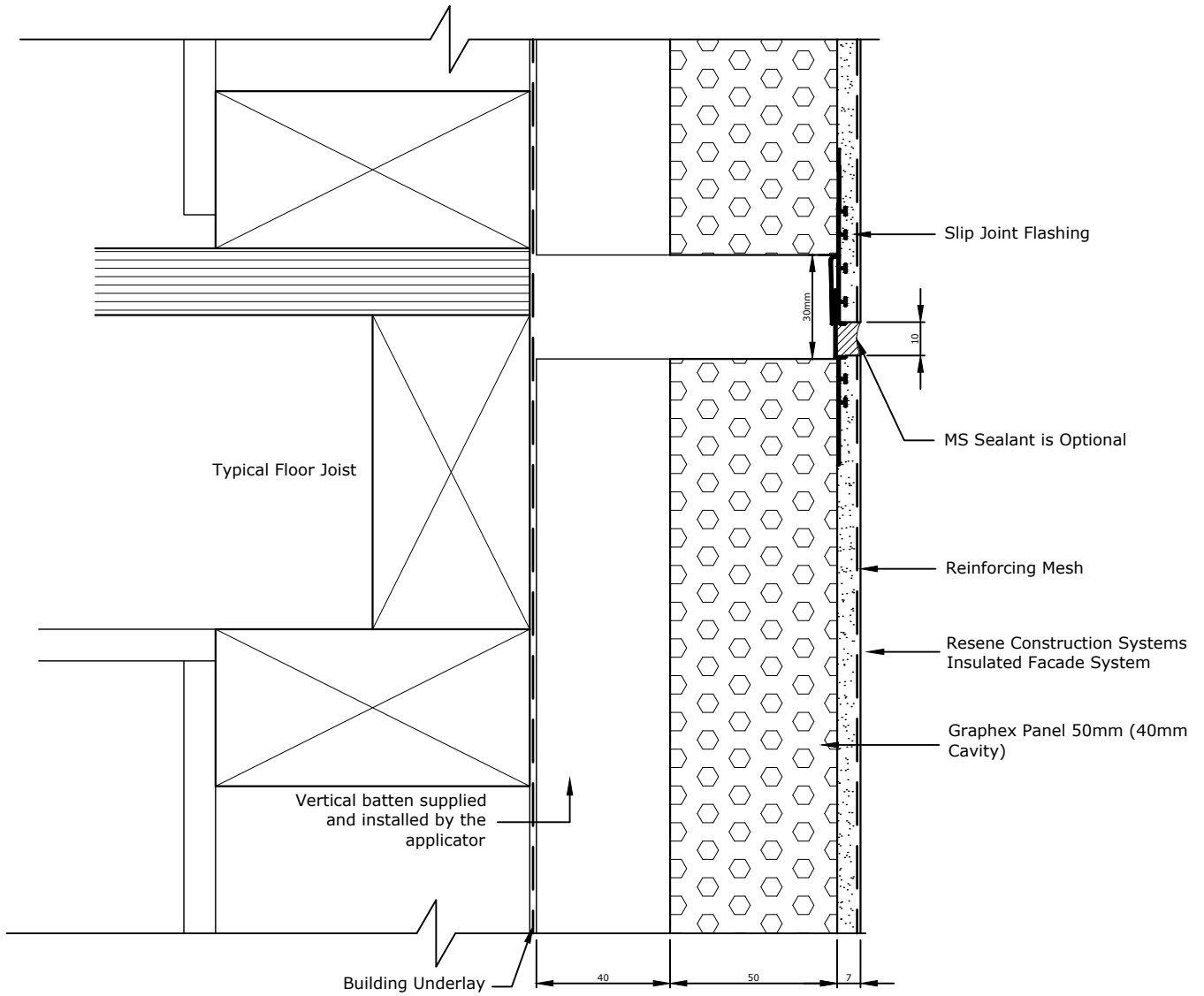
Substrate
 Graphex Panel 50mm (40mm Cavity)

Drawing Name
 Vertical Control Joint

Scale
 1 : 2 @ A4

Date
 1 November 2017

Sheet
 81.10.00



Please note that there should be no fixings into the floor joists, the substrate should be left floating over this point.

All Control Joint spacings and setouts are the responsibility of the Designer, for suggested locations refer to TradeSpec™ Document 1.4 for suggested locations

TradeSpec™ and RenderSpec™ are Registered Trademarks, both Documents are available on the Resene Construction Systems

Resene 
Construction Systems

CONFIDENTIALITY: No part of this publication may be reproduced or transmitted other than the intended use by Resene Construction Systems without written consent from the author.

System
 Insulated Facade System

Substrate
 Graphex Panel 50mm (40mm Cavity)

Drawing Name
 Horizontal Control Joint

Scale
 1 : 2 @ A4

Date
 1 November 2017

Sheet
 81.11.00